

UNINET®

iCOLOR™ ProRIP™ Essentials

Software Instruction Manual

For Windows PC only (Windows 10 / 11 only)

Software Version 3612

February 2025



Table of Contents

IColor ProRIP Essentials Overview	3
Installation	4
Validating and Activating	7
Toolbar	9
Importing Graphics	9
Print Settings Tab	10
Cartridge Configuration	12
Toner Reduction (Rasterization)	13 – 14
Select Output Destination	15
Sizes Tab	15
White Creation Tab	16 - 17
Color & Toner Tab	17 - 18
Alignment Buttons	19
Mouse Right-Click	20
Special Effects Feature	21
Step and Repeat	22
Split Image Using SmartCut	23 – 27
Interface	27
Sending a Job to the Printer	28

IColor ProRIP Essentials Overview

The IColor ProRIP Essentials software is a RIP (Raster Image Processor) software designed for White Toner Laser Transfer Printers. This lightweight and powerful RIP software was designed from the ground up by UNINET and allows users to process images for high-quality output to various printers. It supports multiple file formats and offers advanced features such as color management, spot color replacement, and channel separations. With a user-friendly interface and intuitive workflow, IColor ProRIP Essentials provides powerful functionality where you need it without an overcomplicated interface common in one-size-fits-all RIPs.

In this manual, you'll find detailed instructions on how to use our software to its full potential. We'll walk you through the various features and functionalities, providing tips and tricks along the way. Whether you're new to our software or an experienced user, this manual will help you get the most out of your equipment!

Use the IColor ProRIP Essentials software to print white as an overprint or underprint in one pass. The software allows the user to control the spot white channel feature, as well as spot color overprinting and underprinting. No need to create additional graphics with different color configurations – the software does it all – and in one pass.

Print and Transfer onto:

Natural and synthetic fabric (Light and Dark)
Mugs and ceramics
Light, dark and clear labels
Leather
Light and dark paper stock
Glass
Acrylic
Wood
Metal
Window Cling
Banners
And much more!

Create unique items – The possibilities are endless!

T-shirts and sweatshirts
Aprons
Corporate logo shirts
Mouse pads
Sports apparel
Jackets
Tote bags
Tattoos
And much more!

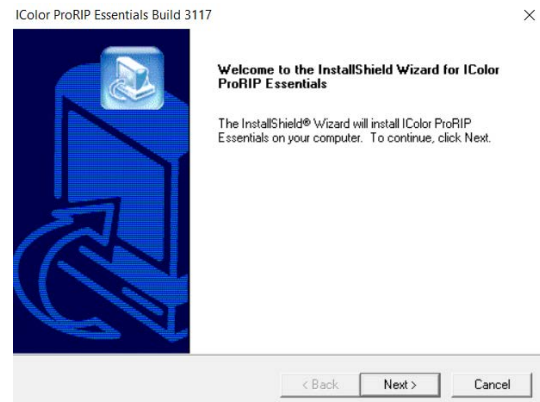
IColor ProRIP Essentials Software Installation

- Make sure all other programs are closed and virus software is uninstalled.
 - ⚠ Failure to uninstall virus software can lead to problems with installation and/or use of software.
 - ⚠ If you keep the virus scan software active after installation, you must add ProRIP Essentials to the 'safe programs' list or issues with ProRIP Essentials software can result. Windows Defender is the only program which, to date, has not affected the functionality of the RIP.

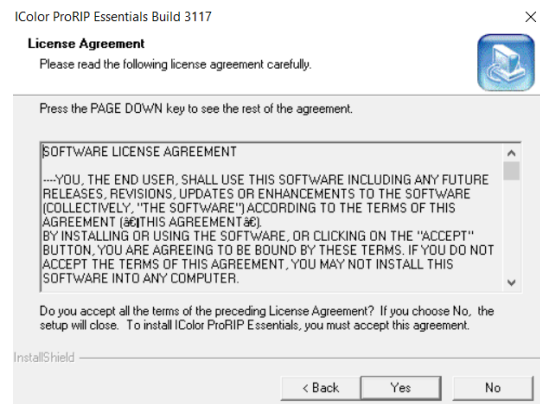
The IColor ProRIP Essentials software can be downloaded here: <https://www.icolorprint.com/PE>

- Double-click the installer to begin the installation.

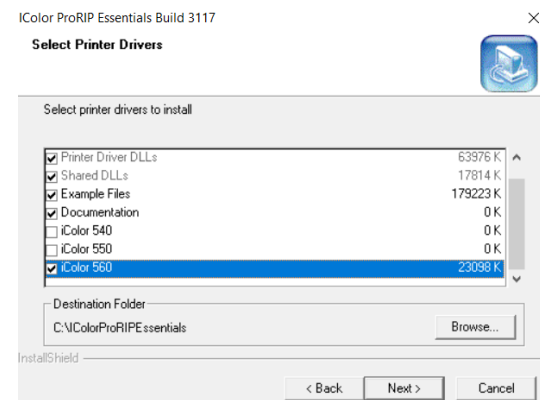
1) An InstallShield Wizard will pop up. Click 'Next'.



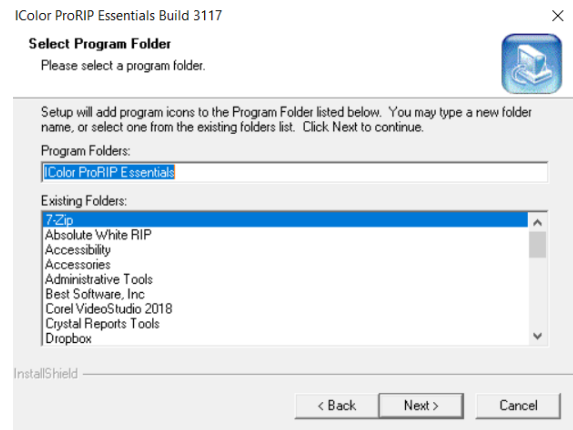
2) Agree to the License Agreement and click 'Next'.



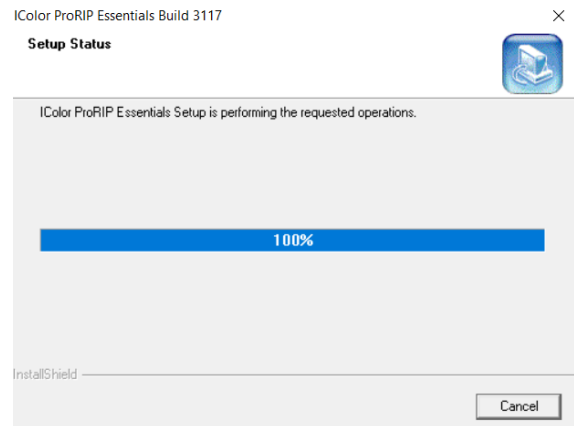
3) Select your printer model from the checklist. If necessary, choose an alternate destination folder, or leave it as default, and click 'Next'.



- 4) Select your Program Folder. You may type a new folder name or select an existing one from the list. Click 'Next'.

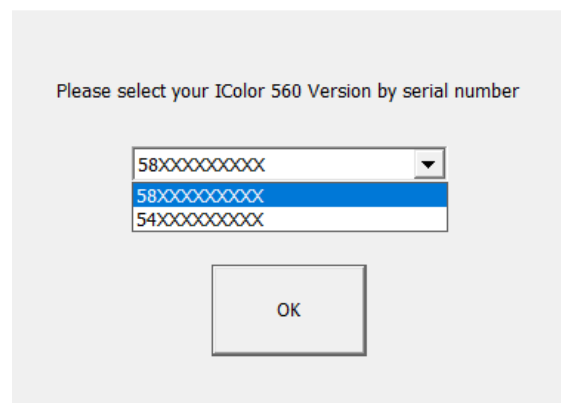


- 5) Wait for the Setup to complete. This may take several minutes while '100%' is displayed.

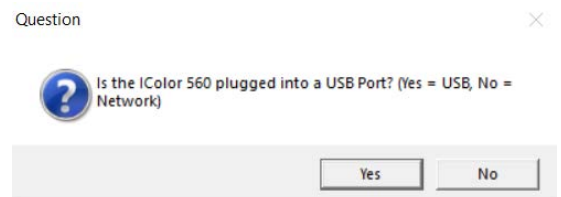


- 6) IColor 560 users only: Select your serial number nomenclature to ensure the proper driver is loaded. Once selected, click 'OK'.

IColor 560 Version Selector



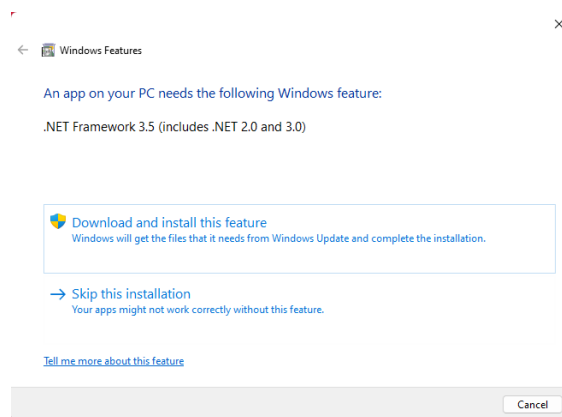
- 7) Confirm how your printer will be connected (USB or Network).



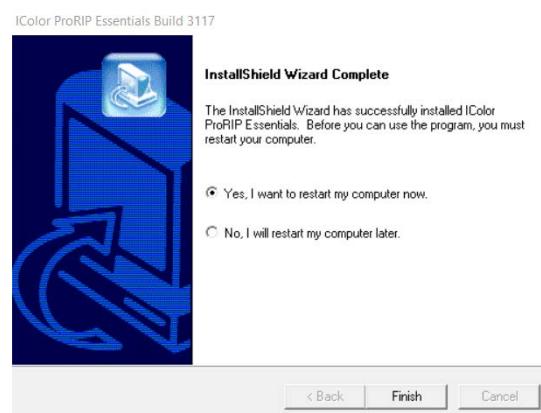
8) The program will find and automatically install the printer driver. If you are updating your software and have already done this step with the previous version, you may close out of this and the installation will complete.



9) If your computer does not have a “.NET Framework 3.5”, a Windows Features window will pop up to ask for an installation. Download and install it. Once the download is finished, your installation is complete.



10) If prompted, restart your computer before launching the software for the first time.

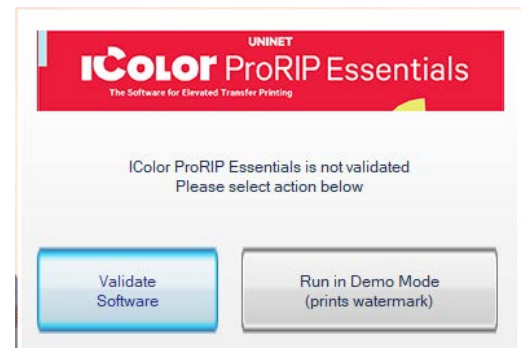


Validating and Activating ProRIP Essentials Software

Validate your software by visiting: <https://www.icolorprint.com/get-support/validate-rip-software>

- ⚠ You only need to validate your computer to run the RIP ONCE. Uninstalling the software does NOT remove the validation from your system. You can re-install or upgrade the software as many times as necessary without losing validation as long as it's on the same computer.
- ⚠ Each Activation Code provides three validations (not three licenses). The Activation Code is a license only to run the RIP on one computer. The extra validations can be issued to provide redundancy in case of accidental validation loss due to hardware failure (hard-disk crashes, etc.) or other unforeseen events.

- 1) Launch the ProRIP Essentials software by double-clicking the icon. On the pop-up window, select 'Validate'. If you are already running the program in Demo Mode, click Utilities > Software Validation to begin the process.



- 2) A new window will open, and you will find your System ID. Input your Activation Code and copy it along with the System ID into the Validation Portal. Click 'Get Validation Code'.

Validation portal for Dongleless versions of UNINET® ProRIP Essentials RIP, Absolute White RIP, and SmartCUT Software

Please read before validating:

- You only need to validate your computer to run the RIP ONCE. Uninstalling the software does NOT remove the validation from your system. You can re-install or upgrade the software as many times as necessary without losing validation as long as it's on the same computer.
- Each activation code provides 3 validations (not 3 licenses). Each activation code is a license to run the RIP on one computer only. The extra validations are issued to provide redundancy in case of accidental loss of validation due to hardware failure (hard-disk crashes, etc.) or other unforeseen events.

Product Code (Software Activation Code)
XXXXXXXXXXXXXXXXXXXX

System ID
XXXXXXXXXXXX

Get Validation Code
(Do not press submit more than once)

Note: Your software Activation Code is located on the upper right side of your laminated quickstart guide that comes with all new printers. If purchased after the fact, your code was likely emailed to you.

- 3) Once you have validated your Activation Code and System ID, the system will show your Validation Code and the Validations remaining. Copy the Validation code from the website to the Software Validation Window and click 'Validate'. Click 'OK'.

Validation portal for Dongleless versions of UNINET® ProRIP Essentials RIP, Absolute White RIP, and SmartCUT Software

Here is your validation code. Please copy this code into your UNINET® IColor software validation window and click on Validate to finish.

Activation Code: **U148F2**
System ID: **025**
Validation Code: **292**
Validations Remaining: **2**

UNINET IColor Software Validation

Validation (visit site below to validate)

[Click to visit UNINET IColor Validation Site](#)

Product:
IColor ProRIP Essentials

Activation Code
U1559

System ID
1984

Validation Code
CFC8

Validate

Exit (Run In Demo Mode)

UNINET IColor Software Validation

Validation (visit site below to validate)

[Click to visit UNINET IColor Validation Site](#)

Product:
IColor ProRIP Essentials

Activation Code
U1559

System ID
1984

Validation Code
CFC8

Validate

Exit (Run In Demo Mode)

VA

Validation Successfull

OK

Toolbar

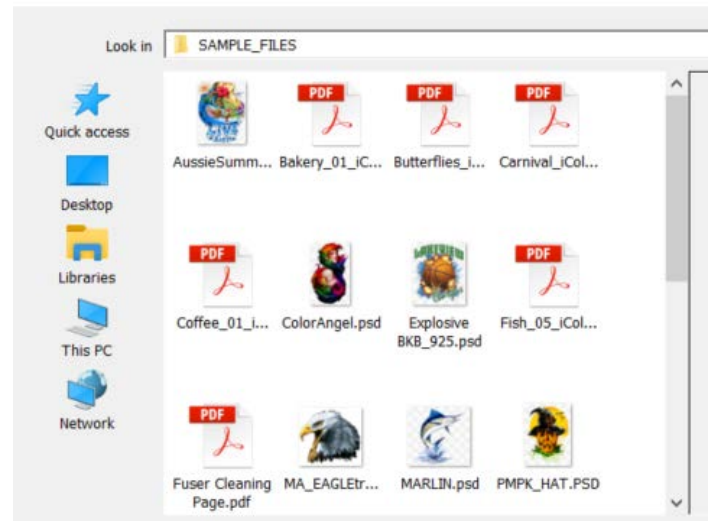
Importing Graphics



To import a graphic, click the 'Import' Button.

Sample files and artwork are all pre-loaded and available for testing purposes. To load other graphics, navigate to where they are stored and click 'open'.

Import Graphic



Display Buttons

Display White Layer



Display Color Layer



Display Job Preview



Display Original File



Print Settings Tab

Printer Model

This will show you the printer drivers installed on your computer and give you the option to look at and select the printer you will use for the print job.

Printer Model: iColor 560 ▼

Print Mode

Each time you select and use a different type of media in the Print Mode section, ProRIP Essentials applies changes on the back end to the correct color profile, amount of toner, fuser settings, and more to ensure your resulting print will be of the highest quality.

Printer Model: iColor 560 ▼

Print Mode: 2 Step Standard ▼

Media Size: Clear Window Cling

Resolution: Easy Tatoo

Input Tray: Generic 1 Step Light

Paper Type: Generic 2 Step Dark

Toner Config: Hard Surface

Copies: Hard Surface Ceramic

Select Output Destination: Hard Surface Ceramic Vibrant

Hard Surface Premium

Hard Surface Premium Vibrant

Hard Surface Vibrant

Hard Surface Wood Leather

Hard Surface Wood Leather Vibrant

1 Step Light

Presto! Ultra Bright 2 Step Textile

Temporary Tatoo

Transparency

2 Step Premium

2 Step Premium Stretch

2 Step Select

2 Step Select Ultra Bright

2 Step Standard

Media Size

Select the media size you are working with. If you are running an A4 media, make sure that it is selected in this option.

Media Size: A4 ▼

Resolution: Letter

Input Tray: Legal

Paper Type: A4

Toner Config: A4 LEG

A4 XL

A5

Letter XL

Overprint

Resolution

For print jobs with small and fine details that need to be used on small materials, you can use 600 x 600 to get the best quality, but 300 x 300 is perfect for most T-shirt designs.

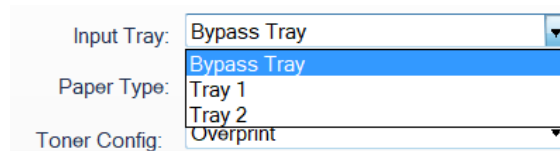
Resolution: 300x300 dpi ▼

Input Tray: 300x300 dpi

600x600 dpi

Input Tray

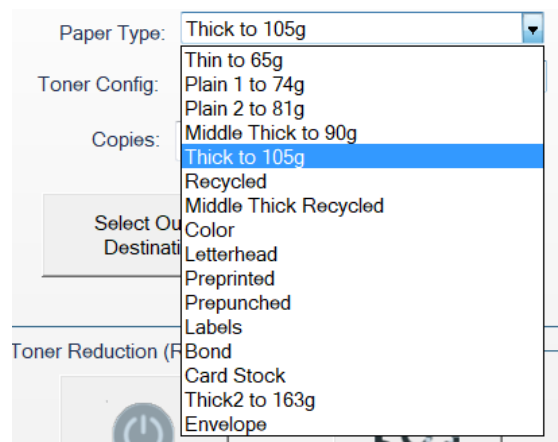
The RIP has been preconfigured to use the proper input tray depending on the media used. You may override the default tray settings if necessary by selecting the preferred tray for the job.



A screenshot of a software interface showing three dropdown menus. The first menu, labeled 'Input Tray:', has 'Bypass Tray' selected. The second menu, labeled 'Paper Type:', has 'Tray 1' selected. The third menu, labeled 'Toner Config:', has 'Overprint' selected.

Paper Type

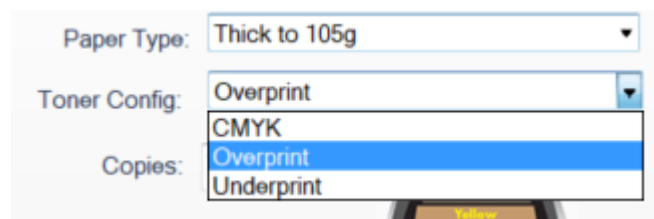
The RIP has been preconfigured to automatically update the paper type settings depending on the media used. You may override the default print settings if necessary, but doing so may cause undesirable results if using certified IColor media or paper.



A screenshot of a software interface showing a dropdown menu for 'Paper Type:' with 'Thick to 105g' selected. Below it, a list of paper types is visible: Thin to 65g, Plain 1 to 74g, Plain 2 to 81g, Middle Thick to 90g, Thick to 105g (highlighted), Recycled, Middle Thick Recycled, Color, Letterhead, Preprinted, Prepunched, Labels, Bond, Card Stock, Thick2 to 163g, and Envelope. Other interface elements like 'Toner Config:', 'Copies:', and 'Select Output Destination' are partially visible.

Toner Config

Choose between CMYK printing, overprint or underprint, depending on the project. Cartridge configurations and explanations are detailed below.



A screenshot of a software interface showing two dropdown menus. The first menu, labeled 'Paper Type:', has 'Thick to 105g' selected. The second menu, labeled 'Toner Config:', has 'Overprint' selected. Below it, a list of toner configurations is visible: CMYK, Overprint (highlighted), and Underprint. The 'Copies:' label is also visible.

IColor 540/550/560 Cartridge Configuration

Standard CMYK Printing



Spot Color Overprinting



Spot Color Underprinting




The **CMYK Configuration** is for standard print jobs that do not require a spot color. This configuration assumes that the media being printed on is white. Use for printing on any white or light colored paper, banner media, window cling, Presto! Media and for Dye Sublimation prints. Note that for Dye Sublimation, there is an ICC Profile that can be used when this is selected (accurate or vibrant).

The **Overprint Configuration** is for printing white as an overprint in one pass for reverse printing (typically used for transfer printing). For this configuration, the white and cyan cartridges are placed in the appropriate slot of your IColor printer. This configuration is for textile and hard surface transfer printing, where white is needed as an overprint, applied on top of all the other colors. When the image is pressed to the garment, the transfer sheet is flipped over and the white becomes the underprint. This is especially important where images have half tones and 100% transfer of the image can be problematic, or when there is white in the image that needs to show through on dark colored garments.

The **Underprint Configuration** is for right side printing and allows for printing white as an underprint in one pass (typically used for transparencies, clear labels, dark media or UniNet Aqua Clear paper). This is configured for 'Right Side Printing' where the white is printed first, as an underprint, all in one pass. In this situation, the RIP converts pure K colors to CMY composite black, and puts in white, not only as a background color, but also in the image where white or page white is specified.

White toner performs the following functions:

- 1) To produce the color white on a dark garment.
- 2) To fill in the halftones on lighter images so that there is enough toner on the page to fully transfer to your garment or to pull all the B adhesive.

 This second point is the most important one and the reason why you cannot simply use a CMYK printer for transfer printing. Also, this is why you **MUST** use the color white all the time (assuming your image has some halftones in it). Even when printing on a white garment and there is no white at all in your artwork. This is the biggest misconception with new users.

 Don't make that mistake, always use the white toner cartridge for any type of transfer printing!

You must move your cartridge configuration around whenever you change your Toner Configuration. For *CMYK*, you will replace the White Cartridge with the Black Cartridge. For *Underprint*, the White cartridge will be on the back of the machine, and the Cyan cartridge will be on the front. For *Overprint*, your cartridge will be arranged in Cyan, Magenta, Yellow, White/Clear.

When setting your Toner Configuration, ensure that the paper you are using will correlate with that new setting.

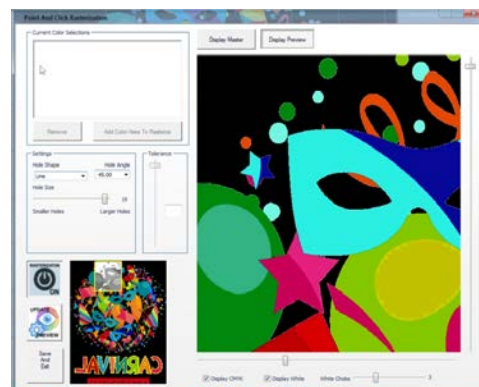
Toner Reduction (Rasterization)

The **Toner Reduction feature** is for rasterizing the artwork to increase the negative space within your graphic. This will allow for better stretching, a longer wash cycle and a softer hand.



Clicking the Configure Toner Reduction button will open the Point and Click Rasterization window. This option allows you to rasterize your graphic's colors selectively.

This will also allow you to configure your rasterization settings to your liking.

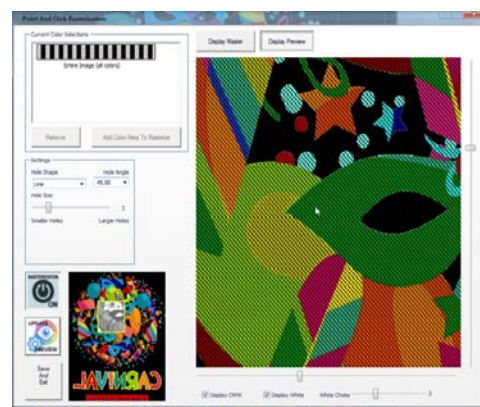


You can select the Hole Shape, Hole Angle, and Hole Size in the Settings.

If you made changes in the configuration, click the '**Preview**' icon to see those changes.



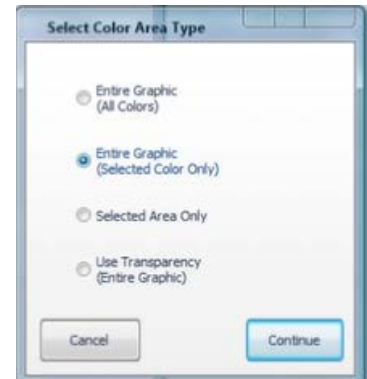
Once you're satisfied with your customization, turn it off and on by clicking the '**Rasterization On/Off**' button as soon as possible to start the re-processing of your new settings



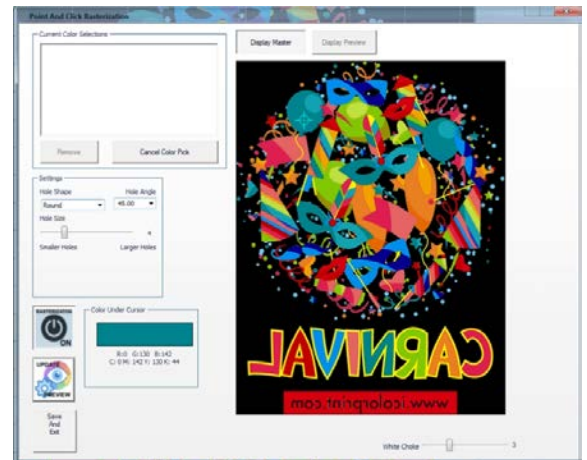
To begin rasterization, click the Add Color/Area to Rasterize button. A new window will pop up for you to select which area you would like to be rasterized.



This will give you four methods to choose from. The 'Selected Color in Entire Graphic' will find and rasterize every instance of a given color within the specified threshold in the graphic, while the 'Selected Area Only' will add rasterization only to the specific object of the color you select. The All Colors in Entire Graphic will rasterize your whole image, and the Entire Graphic by Using Transparency

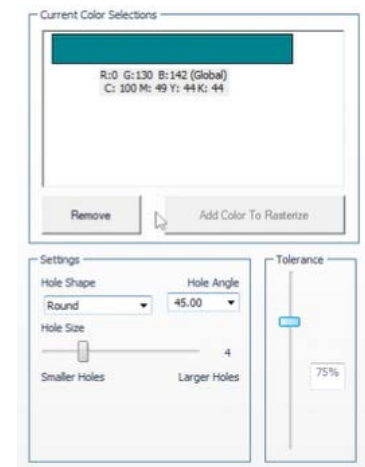


After selecting, click Continue. A new window will pop up showing two options of Color Pick Method. Pick Color From Graphic and Use Color Picker. In most instances, the Pick Color From Graphic is a better option as it will allow you to target a specific color from your graphic using the target icon.



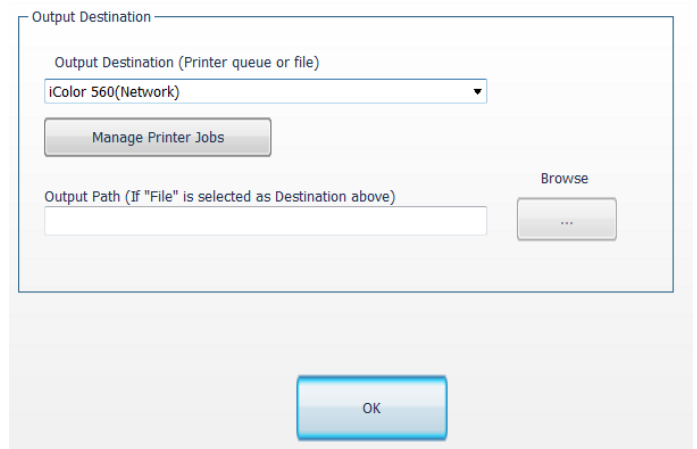
Increasing the **Tolerance** of your color selection impacts anything in a broad range of the color you selected.

Once it's done processing, select the 'Display Preview' button at the top of the pop-up window to get a preview of the rasterized graphic. To add another area selection, click the '**Display Master**' button and then the '**Add Color To Rasterize**' button. Now, you can choose again whether to select a specific color in your entire graphic or just an area in the graphic. After selecting, click Continue. Point the color you want to rasterize using the target icon.



Select Output Destination

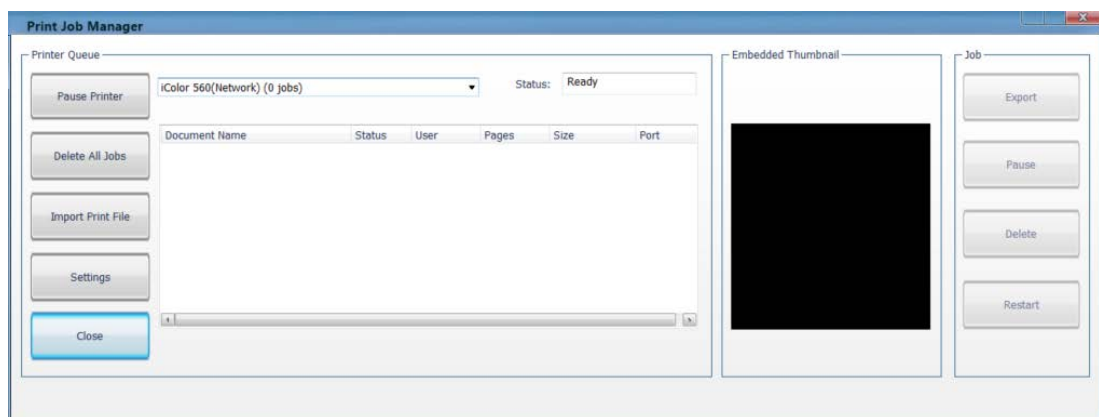
When your graphic is ready, you can select your output destination by choosing your connected printer in the *Output Destination*. You can also select a path instead by selecting **File**, in the *Output Destination* and browsing your desired folder in the Output Path.



The **Output Destination** dialog box contains the following elements:

- Output Destination (Printer queue or file):** A dropdown menu currently showing **iColor 560(Network)**.
- Manage Printer Jobs:** A button located below the dropdown menu.
- Output Path (If "File" is selected as Destination above):** A text input field.
- Browse:** A button with an ellipsis icon next to the output path field.
- OK:** A large blue button at the bottom center of the dialog.

You can also access your Print Job Manager by clicking **Manage Printer Jobs**. This will give you control over your Print Queue.

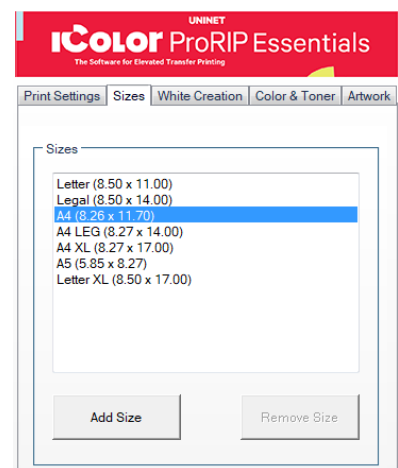


The **Print Job Manager** window is divided into three main sections:

- Printer Queue:** Includes a dropdown menu for the printer (currently **iColor 560(Network) (0 jobs)**), a **Status: Ready** indicator, and buttons for **Pause Printer**, **Delete All Jobs**, **Import Print File**, **Settings**, and **Close**. Below these is a table with columns: **Document Name**, **Status**, **User**, **Pages**, **Size**, and **Port**.
- Embedded Thumbnail:** A large black square representing the print job's thumbnail.
- Job:** A sidebar containing buttons for **Export**, **Pause**, **Delete**, and **Restart**.

Sizes Tab

You must choose the correct size to match the paper being used. You can add a custom size if you can't find the right paper size.



The **Sizes** tab in the **iColor ProRIP Essentials** software shows a list of standard paper sizes. The **A4 (8.26 x 11.70)** size is currently selected and highlighted in blue.

Size	Dimensions (inches)
Letter	8.50 x 11.00
Legal	8.50 x 14.00
A4	8.26 x 11.70
A4 LEg	8.27 x 14.00
A4 XL	8.27 x 17.00
A5	5.85 x 8.27
Letter XL	8.50 x 17.00

At the bottom of the list are two buttons: **Add Size** and **Remove Size**.

White Creation Tab

This will allow you to generate a white layer. This will be useful if you print on a CMYK printer and want it to run for a second pass and print white on top of it.

White Layer Generation

This feature has two options, the **'Use Transparency'** and the **'Use Background Color'**.

- **Use Transparency (Alpha Channel)**

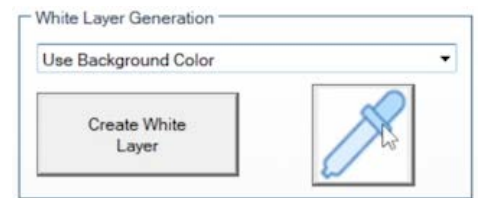
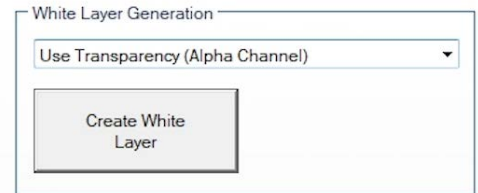
- This option allows you to use the built-in transparency of the image to dictate where we do and don't print toner. If your graphic already has a transparent background, such as a PNG file, use this option.

- **Use Background Color**

- This option allows you to select which color you want to remove. To begin, select the **'Use Background Color'** option in the drop-down. Once selected, click the Eyedropper icon to launch a pop-up window. This will give you a target tool to locate any area that has white on it.

If your graphics have discolored square artifacts that come from compression, you can adjust the value of the **'Threshold'** slider to recover a little bit of range of colors to work with. Once satisfied, click OK.

Print Settings | Sizes | White Creation | Color & Toner | Artwor



Remove Black

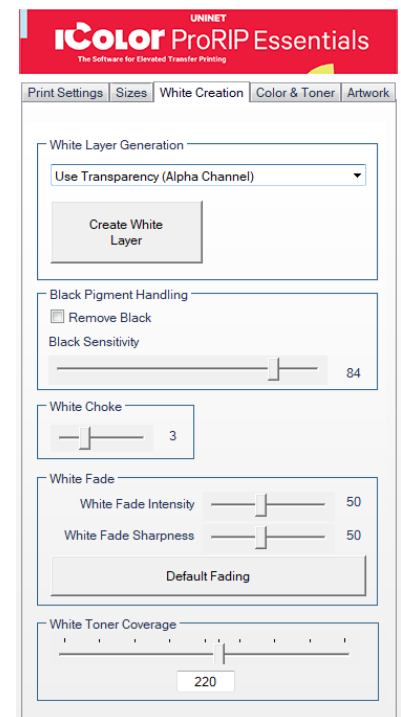
Printing an image with black on a dark garment using a two-step transfer will not look good or convincing. The Remove Black feature removes most of the area considered leaning towards solid black without getting any transition areas caught up in it. The lower the setting, the lighter the colors you'll remove.

White Choke | White Fade

Use this when you notice white fringing around your graphics and you want to bring in the white so you don't have any white outlining. This setting is best left on default.

White Toner Coverage

This feature will allow you to control the amount of white toner applied to different areas of an image or design, depending on the desired effect or result. For two-step transfers, more toner could make your print more brittle and less stretchable.



Color & Toner Tab

Color Profile

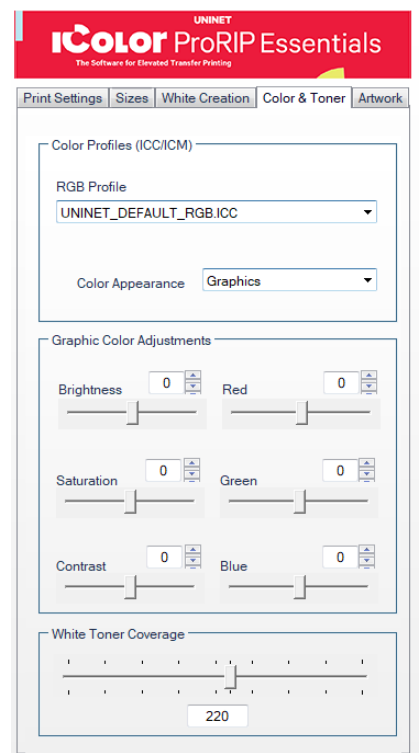
This allows you to select the appropriate color profile for your particular printing device and media, which helps to ensure accurate color reproduction and consistency across different print jobs. This can be adjusted based on the type of printer, toner, and media being used, as well as the desired output quality and color accuracy. By default, the *UNINET_DEFAULT_RGB ICC* is selected.

Graphic Color Adjustments

You can make basic color adjustments to your graphic with these sliders, such as Brightness, Saturation, and Contrast. You can also adjust the Reds, Greens, and Blues to your liking.

White Toner Coverage

This feature will allow you to control the amount of white toner applied to different areas of an image or design, depending on the desired effect or result. For two-step transfers, more toner could make your print more brittle and less stretchable.



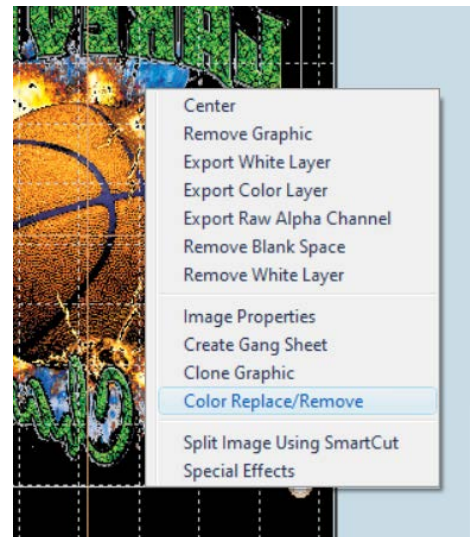
White Toner Coverage

This feature will allow you to control the amount of white toner applied to different areas of an image or design, depending on the desired effect or result. For two-step transfers, more toner could make your print more brittle and less stretchable.

Color Replace/Remove

This feature will allow you to replace or remove a specific color or a broad selection of colors in your graphic.

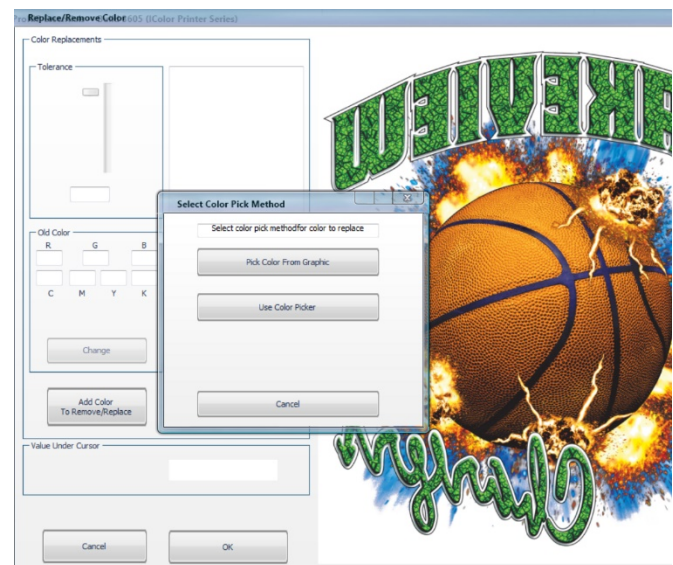
Right-clicking on your artwork preview will display a menu. The 'Color Replace/Remove' option allows you to change or remove a specific color in your artwork. In most instances, the **Pick Color From Graphic** is a better option as it will allow you to target a specific color from your graphic using the target icon.



The 'Replace/Remove Color' window will open.

Click the 'Add Color To Remove/Replace' button and you will be prompted to choose the method to select the color you want to remove or replace.

After that, you will be next prompted for your new color or to remove color. Once you have made all of your changes, click 'OK' to save.



Alignment Buttons

The buttons are used to position and reposition your artwork in the workspace.



Center Graphic Horizontally



Center Graphic Vertically



Rotate Counter Clockwise 90 Degrees



Rotate Clockwise 90 Degrees



Rotate Specified Amount



Flip Vertically



Remove Blank Space



Mirror / Un-Mirror



Substrate Color (For Display Only)



Fill Platen

Mouse Right-Click

These are shortcuts you can access by right-clicking your mouse.

Center

Aligns your graphic to the center of the platen.

Remove Graphic

Deletes the graphic in your platen.

Export White Layer

Allows you to export your White Layer only on a desired path/destination.

Export Color Layer

Allows you to export your Color Layer only on a desired path/destination.

Export Raw Alpha Channel

Allows you to export your Raw Alpha Channel only on a desired path/destination.

Remove Blank Space

This will automatically detect and remove any excess blank space or borders on your graphic.

Image Properties

This allows you to view the path of your imported graphic and edit its properties, such as the dimension, resolution, scale, and position on the platen.

Create Gang Sheet

This function allows you to combine multiple print jobs or images onto a single sheet/page. This is particularly useful for printing applications requiring multiple copies of an image/graphic, such as labels, stickers, or decals.

Clone Graphic

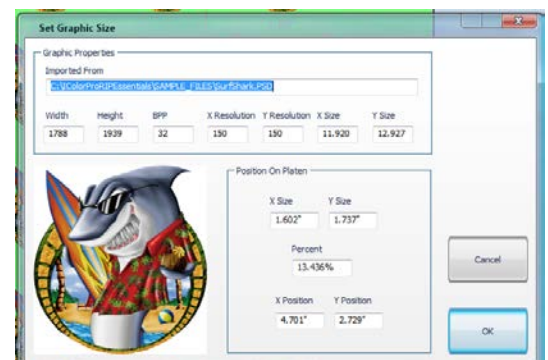
This creates a single copy of your selected graphic on the platen.

Color Replace/Remove

This function allows you to replace a specific color of an image with another color. See page 18.

Split Image using SmartCut

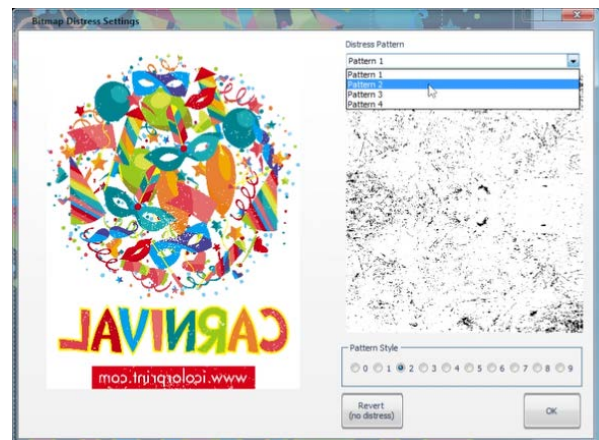
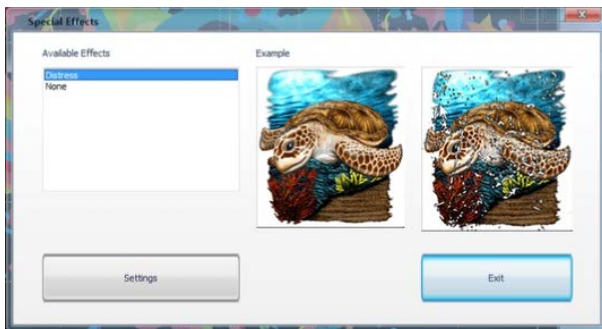
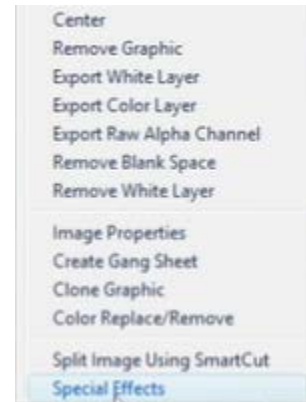
This feature is particularly useful for printing applications where the final output is larger than the size of the printer or media, and the image or graphic must be printed in sections or tiles. See page 23.



Special Effects Feature

To get started, right-click on your artwork and select **Special Effects**. A new window will pop up, showing you available options for special effects. Select the **Distress** effect and click the **Settings** button and a new window will appear, allowing you to choose the pattern style and the distress on the pattern.

Click the **OK** button after choosing your desired settings.

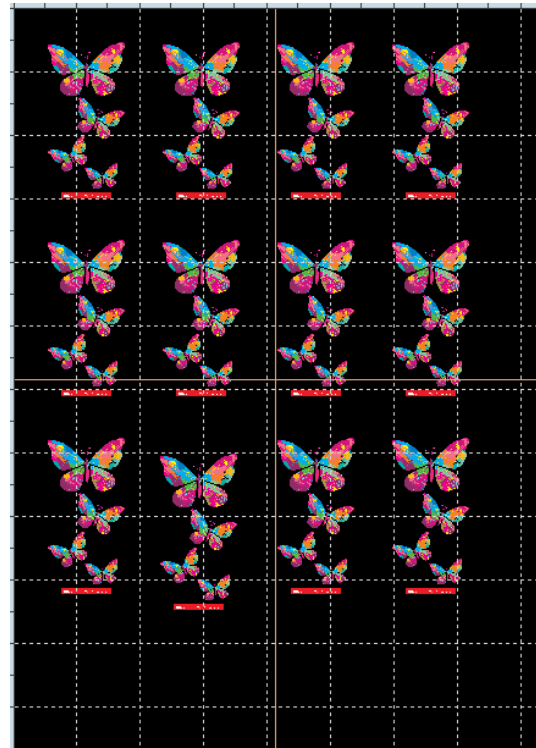
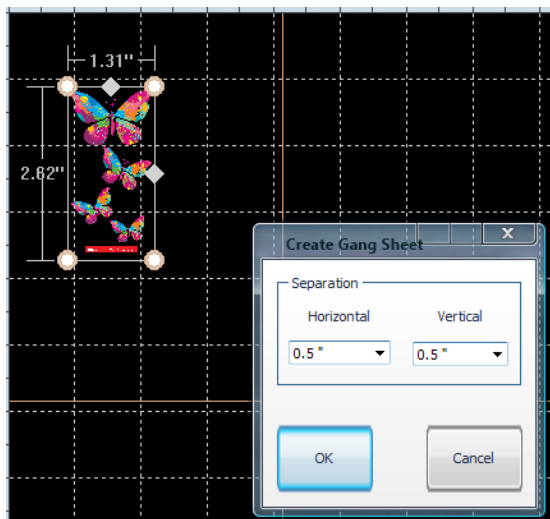


Step and Repeat

This allows you to duplicate your graphic and create a pattern. This is also used to create gang sheets. The number of duplicates will depend on the distance between each graphic as well as the size.

To begin, resize your image to your desired size and position it on the top left part of the platen. Click **Image** on the Toolbar and select **Step and Repeat**. A window will pop up, and you will be prompted to input your desired separation/gap between each graphic copy.

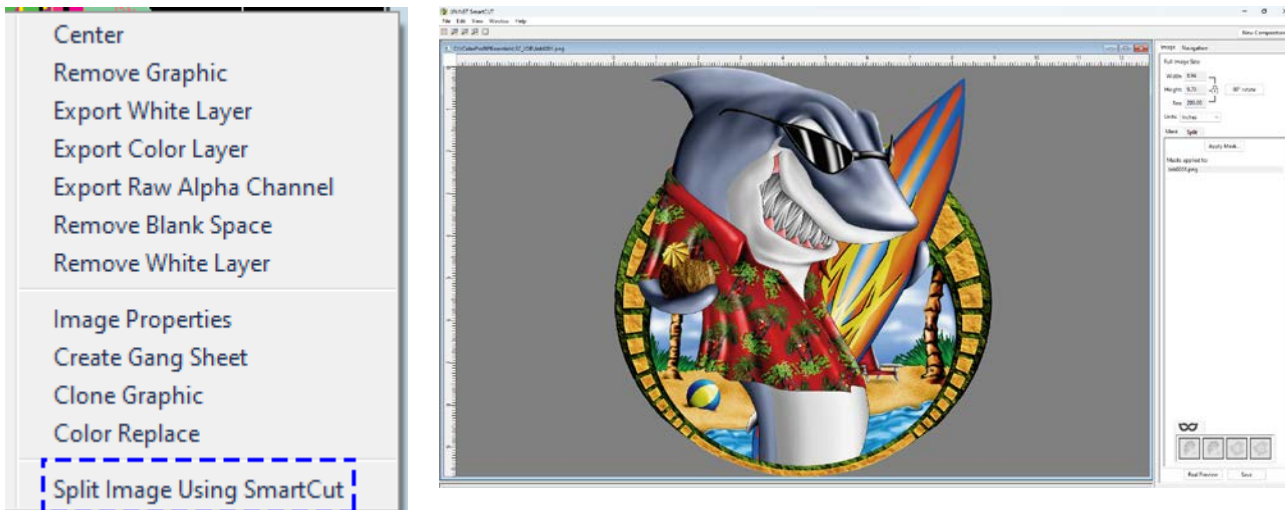
The RIP software will automatically space out each duplicate that will fit the platen.



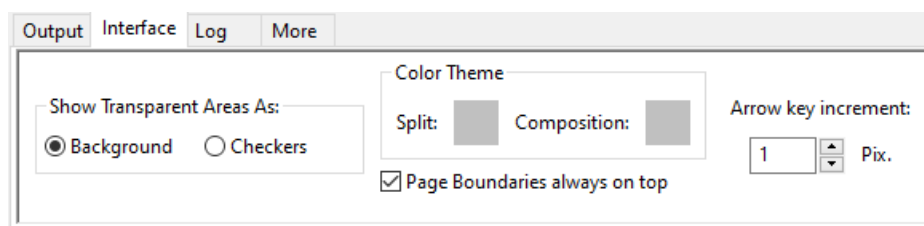
Split Image Using SmartCut

SmartCut allows owners of smaller-width printers to print oversized images easily.

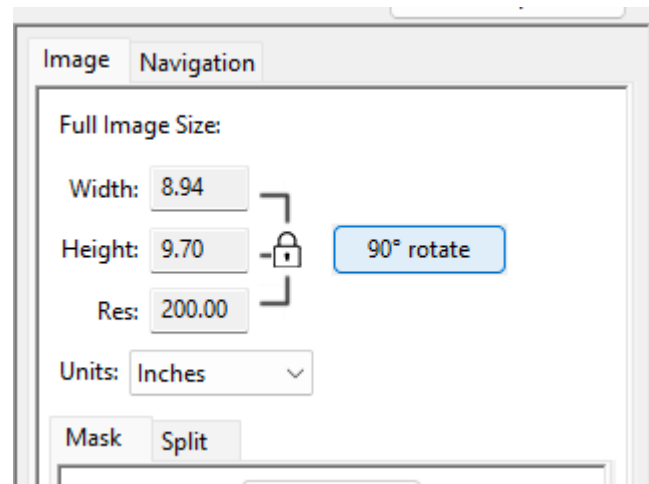
To split the graphic, right-click on the image and select Split Image using SmartCut, and a new window will open.



- 1) The 'Interface' tab controls how the splitting window looks and operates.
 - You may select different backgrounds depending on your preference.
 - 'Show Transparent Areas As' allows you to show transparent areas as either the grey background color or with checkers.
 - 'Color Theme' allows you to change the normally grey background into any color of your choosing. Use this feature to simulate the color of the intended substrate (although the 'Real Preview' option presents a more realistic view of the final product).
 - You can separately choose the background of the intended split window as well as the 'New Composition' window.
 - 'Arrow key increment' will allow you to type a value which will correspond to how far the image(s) are moved for each arrow key strike. The larger the number, the greater the distance images will move.



- 2) Use the '90° rotate' button to change orientation.
- This may be necessary to find the best way to split your graphic.
 - You can alter the size of the original image as desired under the 'Full Image Size' parameters for the best possible fit on the print sheet sizes.
 - This can be done at any point in the process and may be necessary to do when lining up the split windows.
 - You can zoom in and out using the tool bar in the upper left corner of the screen at any time.



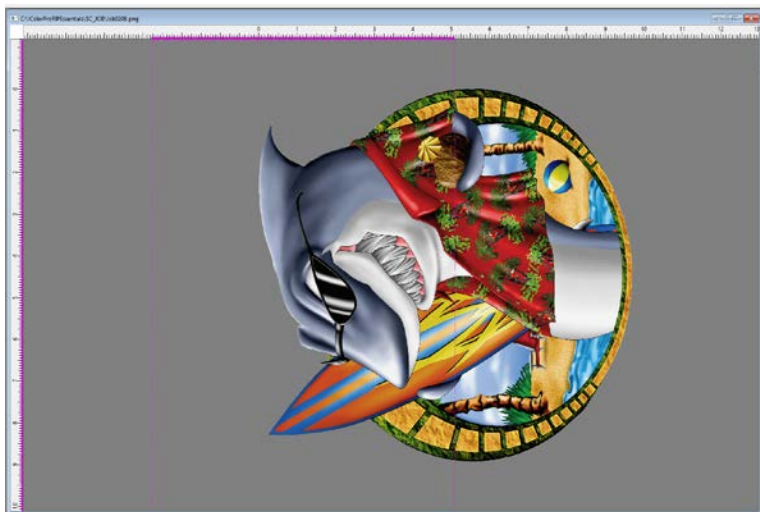
- 3) Determine the size of the transparent print sheets you wish to print the split images onto.
- There are several preset media sizes available in the software.
 - You can also create a custom size if desired.
 - Note that a safe area is already built into the margins to help avoid overbleeding.
- 4) To set the size of the first sheet, click on the 'gear' icon next to the 'First' pink box, then choose the size of the media you wish to use for the first part of the image and click 'OK'.



A pink boundary box/marker will appear over half of the image representing where the first half of the image will print on the media size selected. This can be positioned anywhere by dragging it.

If the image is too large for the box, you can adjust your overall image size to fit by going to the 'Full Image Size' section at the top right of the screen. The aspect ratio will always be locked.

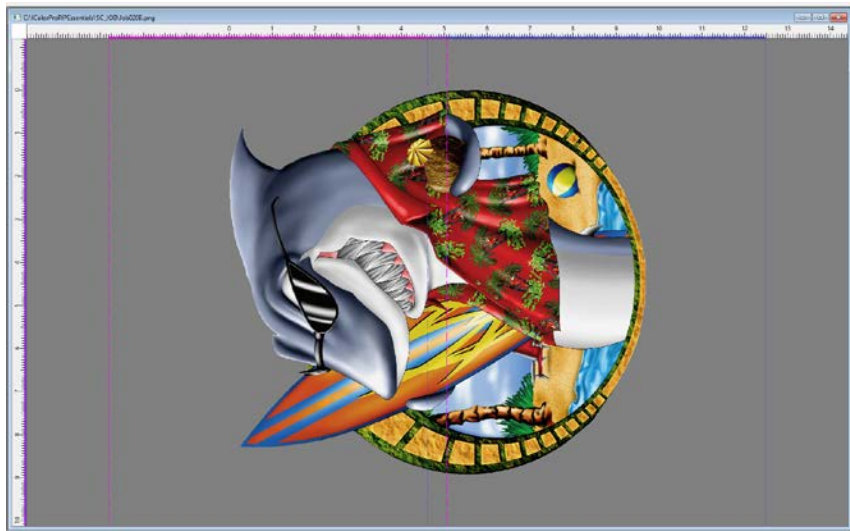
To resize an image, delete the bounding box first by clicking the gear icon again and selecting Delete.



Next, click on the gear icon next to the 'Second' blue box. Select the media size you wish to use for the second part of the image and click 'OK'.

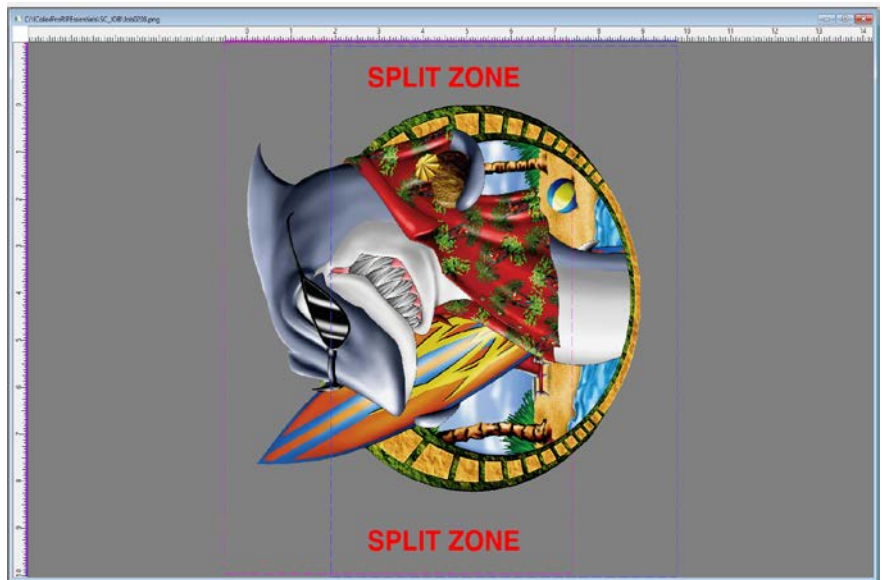


The graphic should safely fit inside the final sheet sizes. The safe margin area is pre-programmed already. Once you have established the page sizes for splitting, drag the split boxes to select the best zone for image splitting.



The position of the split zone should be placed in an area where the cut line will be the least noticeable. The width of the cut zone should also be wide enough to follow the natural contours in the image for best results.

Select Smart Split on the right side window to start splitting the image.

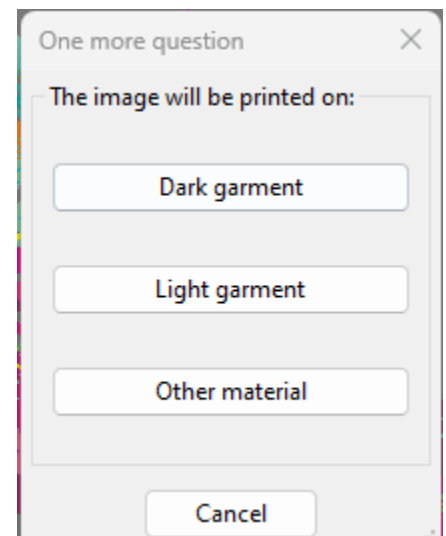


A dialog box will ask where the image will be printed on. The Split Function has a preference to process files through transparent areas as a priority,


- The Dark Garment option treats black as a transparent color.
- The Light Garment option treats white as a transparent color.
- The Other Material follows edges without regard to color, asking if you are not using any rasterization or masking.

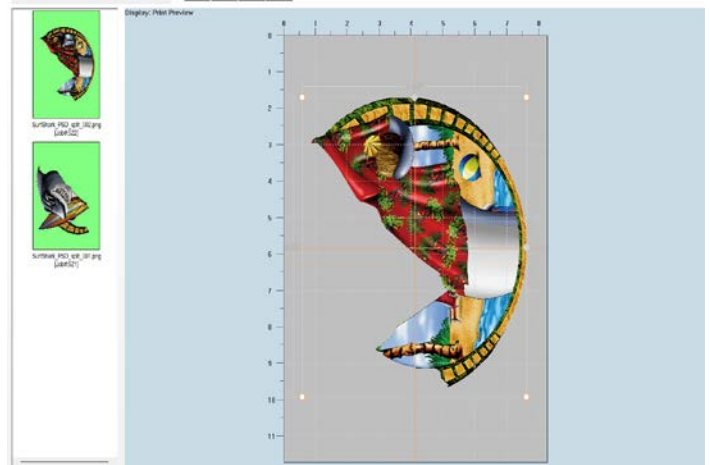
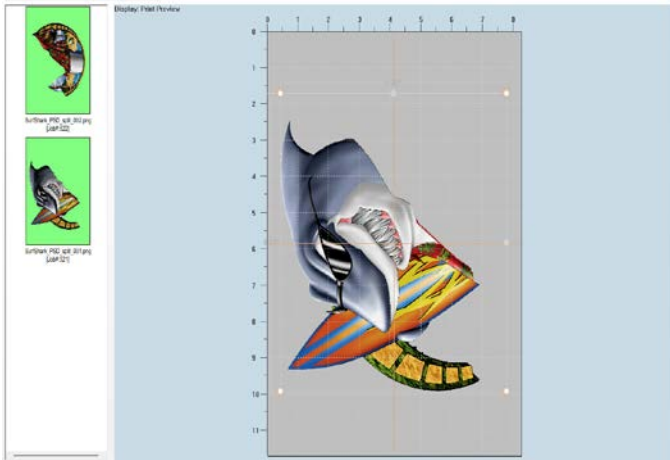
These options allow the user to remove either of these colors after importing into the RIP software with a rasterization masking feature, so the split will be undetectable once pressed.

The process of splitting the image may take a few minutes depending on the complexity of the image and the speed of your computer. You can view the progress of the splitting process in the upper left corner of the screen.



Once your split results are ready, Click 'Save' and the 2 page graphic will be loaded into the RIP.

 The graphic may be centered on the page but DO NOT alter the dimensions of each split image in any way or the graphic won't line up properly when reassembled on your substrate or textile.

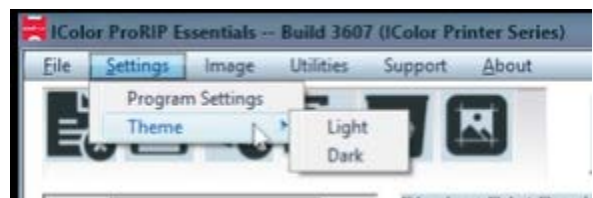


For more in-depth instruction for the IColor SmartCUT software, consult the User Manual located at www.icolorprint.com/support.

Interface

Theme (Dark/Light Mode)

Light mode and dark mode are display settings that use different colors for the background and text on a device. Light mode is the default setting, while dark mode is a color scheme with a dark background with light text. To switch into dark mode, go to **Settings** in the toolbar, select **Theme**, and click **Dark**. The same procedure applies if you want to revert to **Light**.

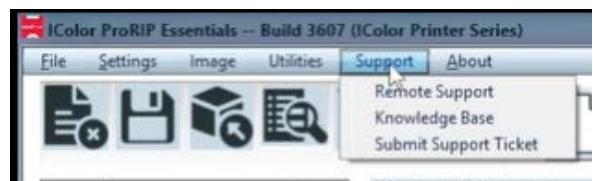


Support

Remote Support gives the support team the opportunity to work with you directly to fix the problem you encounter with your printer. They will access your computer with Team Viewer.

Knowledge Base sends you directly to the Technical Support page of the iColor website, where you can access all types of brochures, flyers, and instruction manuals for all printers and transfer media.

Submit Support Ticket will let you send an email to the support team describing issues you encounter with your printer.



Sending a Job to the Printer

Ensure the correct printer models is selected under 'Print Settings', as well as the rest of the sections. When ready, click the Print icon to output your job in the printer.

To see video instructions for IColor™ ProRIP Essentials, visit
<https://www.icolorprint.com/video#video-64551ff4bc032b8a9d581ae1>



AVAILABLE TRANSFER PAPER AND OTHER MEDIA OPTIONS:

- **IColor™ Premium 2 Step Transfer Paper** for light and dark colored garments
- **IColor™ Select and Select Ultra Bright 2 Step Transfer Paper** for light and dark colored garments
- **IColor™ Standard 2 Step Transfer Paper** for light and dark colored garments
- **IColor™ Glitter Adhesive 2 Step Transfer Paper** (for use with IColor™ Standard 2 Step Transfer Paper)
- **IColor™ Light 1-Step Transfer Paper** for light colored garments
- **IColor™ Presto 2 Step Transfer Paper** for textiles and hard surfaces
- **IColor™ Premium 2 Step Temporary Tattoo, Easy Tattoo and Easy Tattoo Pro Transfer Paper**
- **IColor™ Premium and Wood and Leather Hard Surface 1-Step Transfer Paper**
- **IColor™ AquaClear 1-Step Decal Transfer Paper** for candles and other substrates not resistant to heat
- **IColor™ Label / Sticker Paper** (Clear and White) in Letter and Tabloid size
- **IColor™ Window Cling Media** (Clear and White) in Banner and cut sheet options
- **IColor™ Banner Paper**
- **IColor™ Magnetic Media** in Letter and Tabloid size

...and more! Contact your dealer for more information.