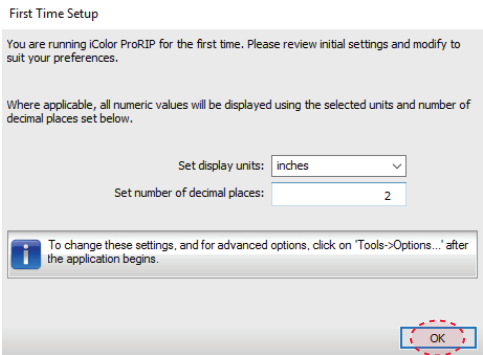


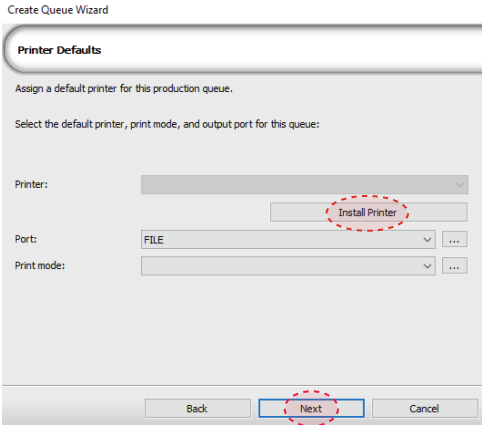
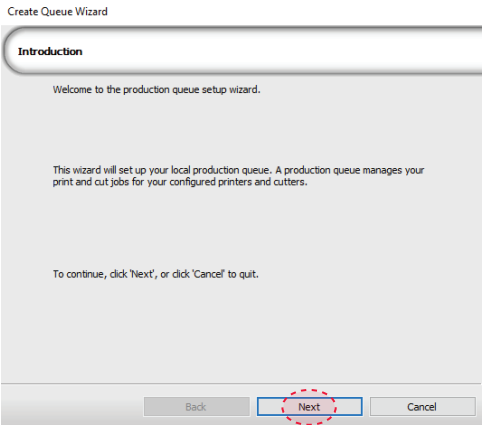
8. Uninet IColor ProRIP Software
First time Setup

- Ensure the ProRIP dongle is inserted and you are connected to the internet (required)
- Launch the software
- Set unit of measure and decimal places, then select OK.

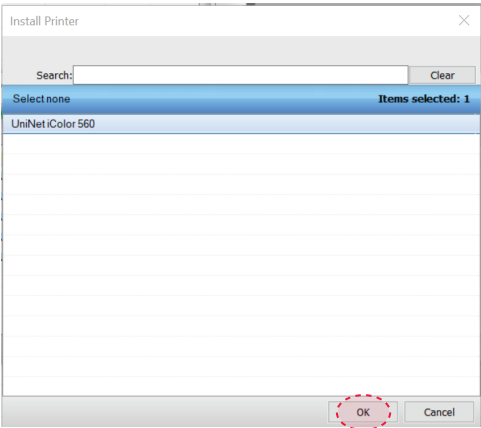


9. ProRIP opens, the Queue Wizard will begin the installation of the support files for your IColor 560 printer

- Select Next
- Select Install Printer

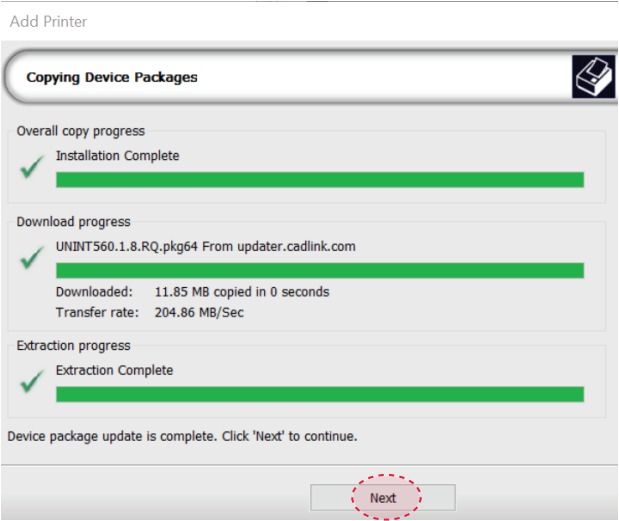
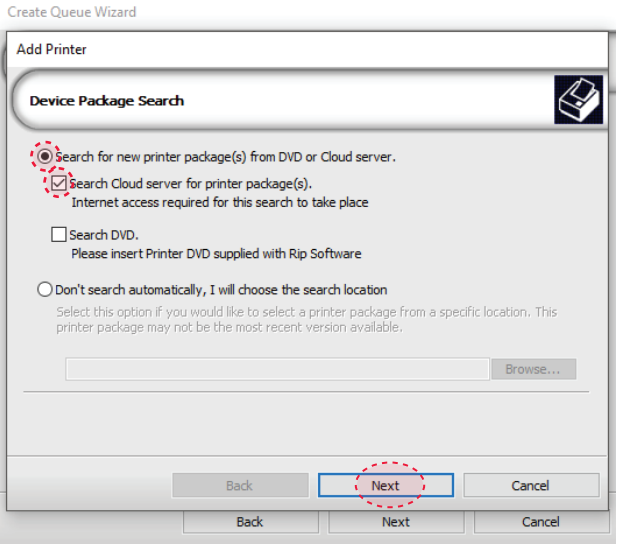


10. Select the IColor 560 printer from the support menu and select 'OK'



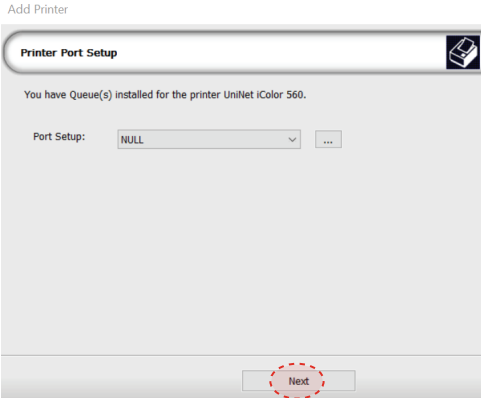
11. Device Package Search

- Select 'Search' for new printer package
- Select 'Next' to continue the installation



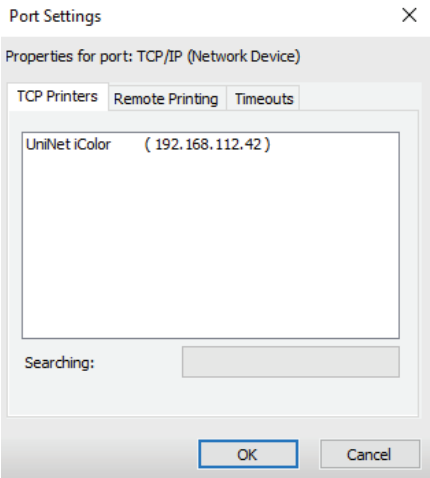
12. Select your 'Port' from the menu

- Network or USB (Choose TCP/IP for network)
- If connected via USB, choose the printer as identified in the drop down menu.

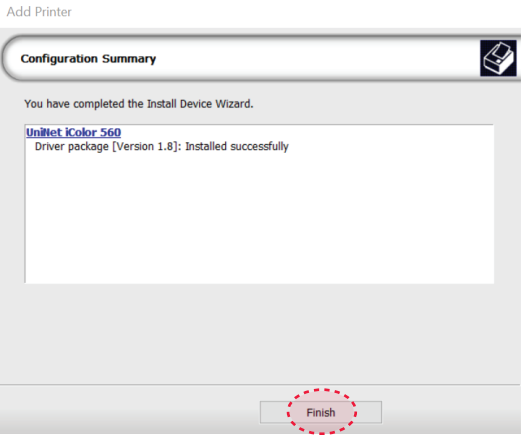


13. Port Configuration (network)

- If connected via network, once TCP/IP is selected, the software will poll your network for available printers.
- *** Be sure to set a static IP address for your printer so that the IP addres does not change later. If this occurs, you will need to repeat this step**



– If you need to change or reset the ports in the future:
Click **Queue >> Manage Queues** to view, update or change the port settings.

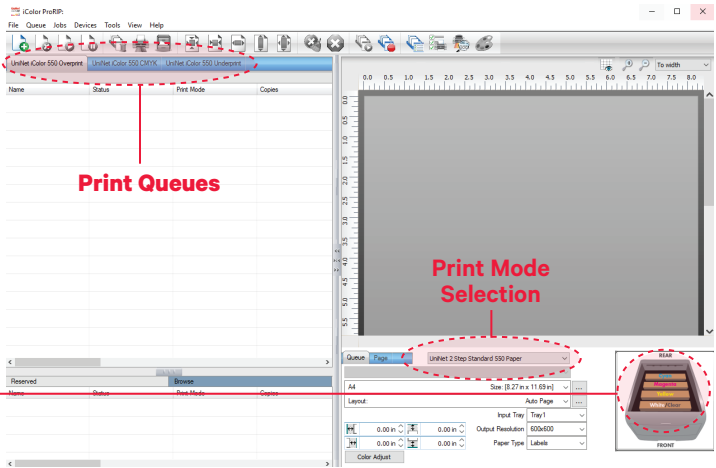


14. Select the proper Print Queue for your project

- A. Select your 'Print Que' and 'Print Mode'
- The 'Print Modes' have preset values for white coverage, choke, paper size, paper tray and mirror settings

These can be modified as needed

Note:
Preview icon should match the physical cartridge configuration of the printer.



15. Import + Print Graphic

- A. Three ways to import graphics
 - 1. Select the 'green plus' icon and navigating to the proper folder.
 - 2. Select File > Import File
 - 3. Simply dragging and dropping your file into the queue
- B. Select the desired file
- C. Select 'Print' icon in the menu bar.

