

UNINET iColor

IColor 800W Digital Color + White Transfer Media Printer User Manual



Table of Contents

IColor 800W Model Summary	Page 3
Unpacking and Installing Consumables	Page 3 - 6
Loading Media	Page 6
Loading Banner Media (Optional Feature)	Page 7 – 8
Removing Jammed Media	Page 9
IColor ProRIP Software Information	Page 10 – 11
IColor ProRIP Software Installation	Page 12 - 15
IColor ProRIP Software Initial Setup	Page 15 - 19
Using the IColor ProRIP Software	Page 20 - 24
About IColor SmartCUT Software	Page 25
UniNet IColor Consumable Replacement	Page 26
IColor 800W Tech Tips	Page 26 – 27
About UNINET / Available Media Options	Page 27
IColor 800W System Specifications	Page 28



Important note about USB Drives shipped with your system: Do not lose your RIP dongle! This is your license key and if lost, a cost for replacement will be incurred. Associated USB dongles for software such as drivers, RIP programs, SmartCUT and more have a 3 month warranty on the physical drive. UniNet suggests that you limit the physical handling of RIP dongles and use external USB hubs (as an example). If damaged (past the 3 month warranty period), a cost for replacement will be incurred.

IColor 800W Model Summary

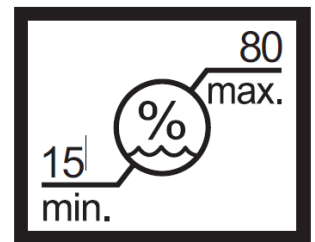
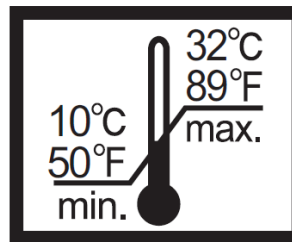
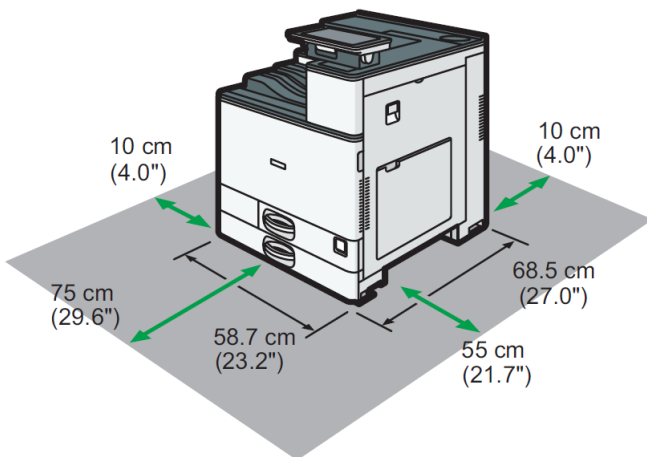
The IColor 800W printer has been developed to produce high-quality, conventional color prints with the out-of-the-box functionality of printing in white. Now you can print on media up to 12.6" x 49.6" with IColor Technology.

Please follow the enclosed quick setup guide, as well as this manual, to get started. The IColor 800W comes complete with 4 toner cartridges for full color + white printing (CMYW), including our exclusive fluorescent white cartridge. Print a white overprint (in one pass) in concert with the IColor ProRIP software. Black is produced using composite black (made from CMY), and features the blackest composite black in the industry.

Please note that vector and line art images, including text, are likely to produce the best results. For exciting design ideas and suggestions for using the IColor 800W for maximum effect, please visit our website at www.icolorprint.com.

IColor Standard 550/800 2 Step media has been optimized to provide quality results when used with the printer, enabling the user to produce eye-catching designs which may be applied to a variety of textiles and surfaces.

Unpacking and installing consumables

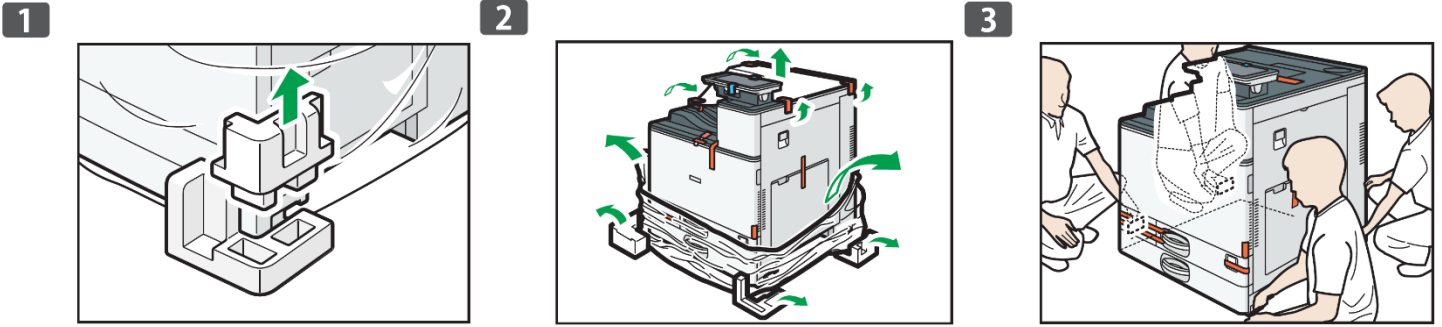


❖ Power Source

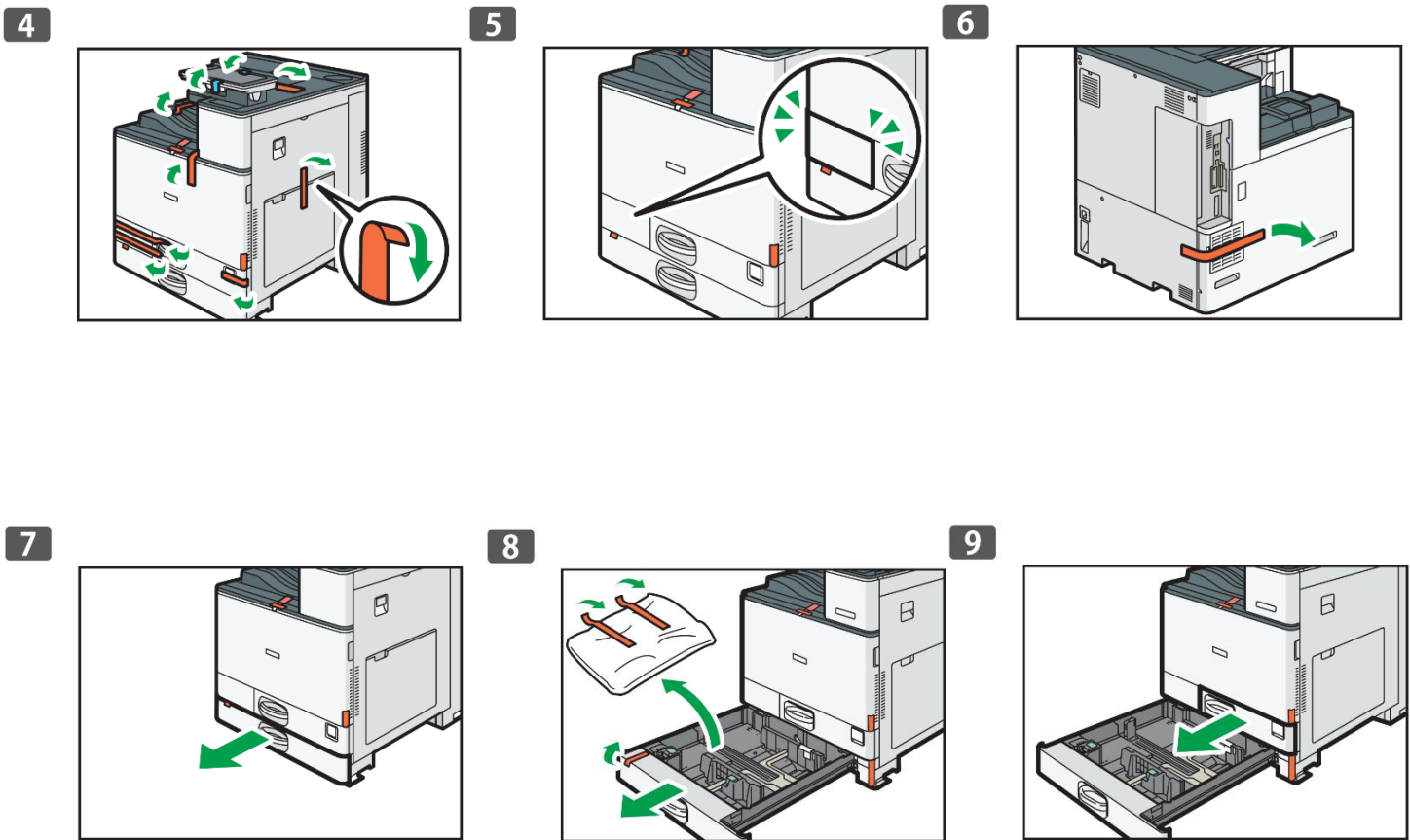
- 120 - 127 V, 60 Hz, 12 A or more
- 220 - 240 V, 50/60 Hz, 10 A



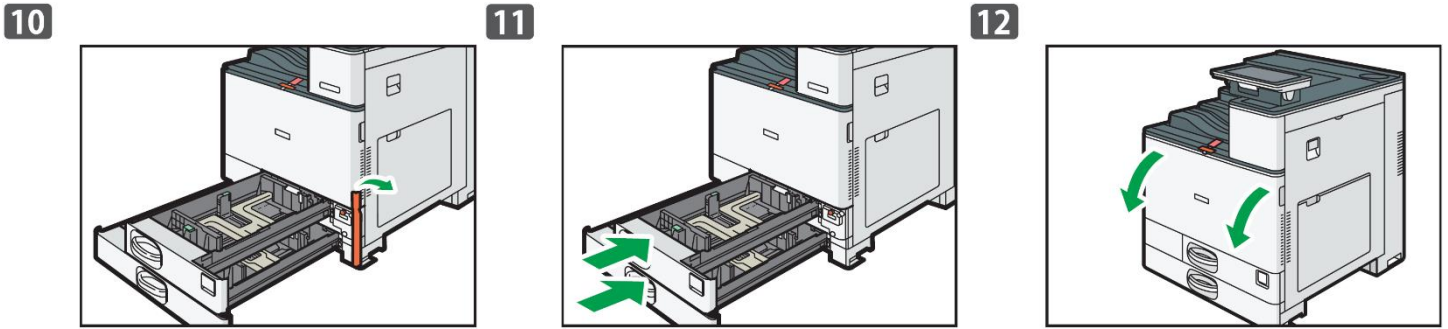
Take note of the install location, temperature and humidity settings which are suggested for optimal printing conditions.



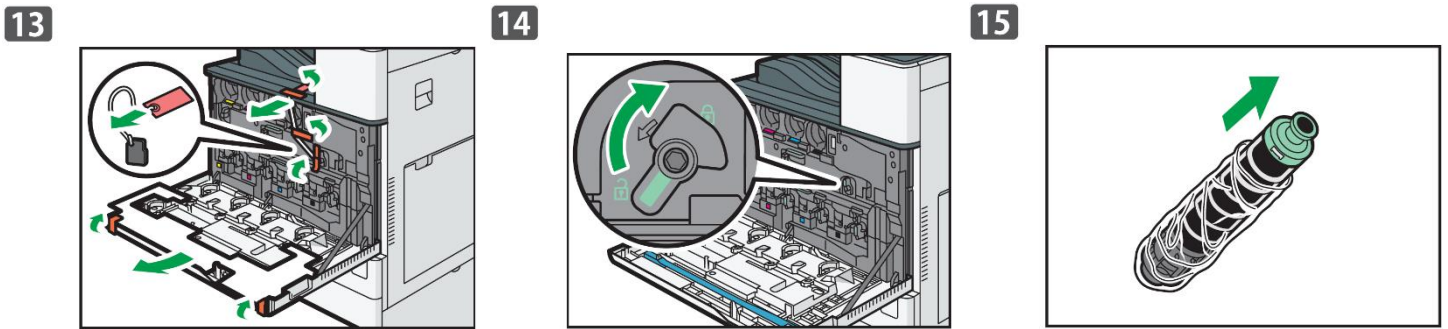
Lift locks up from the bottom of the box, unwrap the printer and team lift to remove from the packaging.



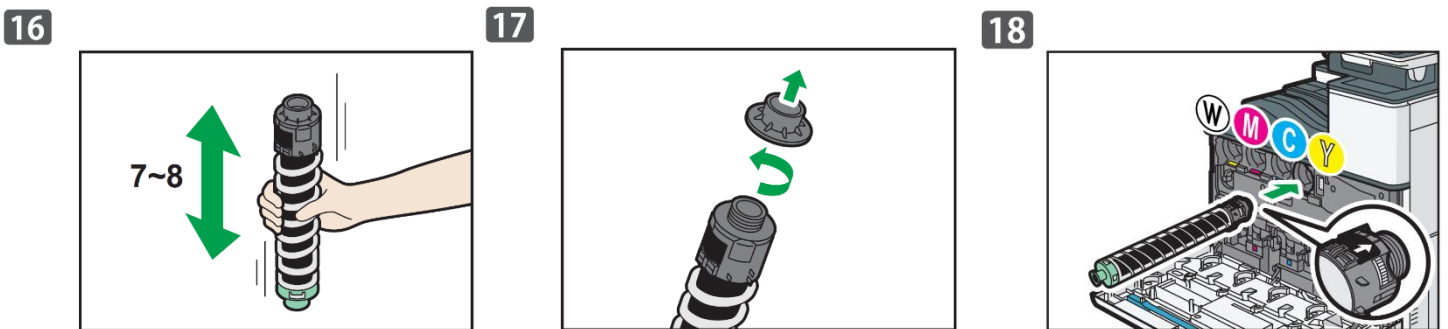
Remove orange tape and packing material as indicated.



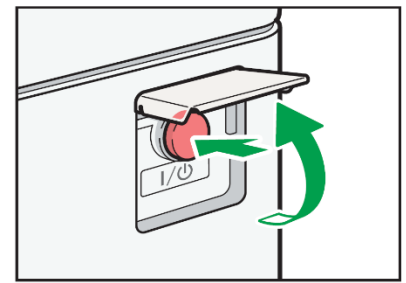
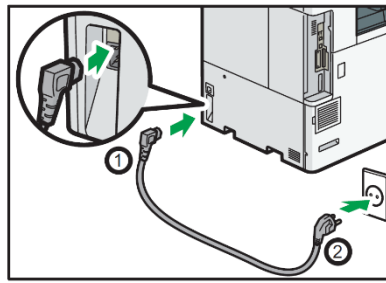
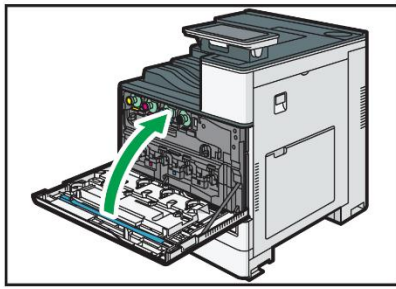
Close paper tray and open the main toner compartment.



Remove the rest of the orange tape, set the lock and unpack the toner cartridges.



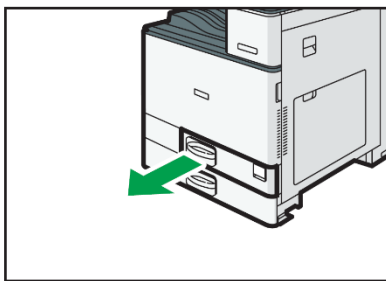
Gently shake each toner cartridge back and forth 7 or 8 times to loosen the toner that may be settled in the cartridge due to shipping. Unscrew the toner lock and insert each cartridge into the corresponding section with the arrow on top.



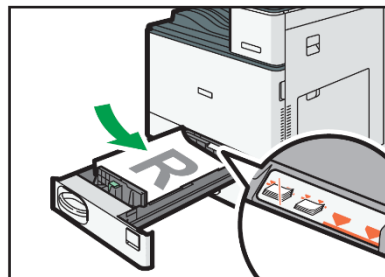
Close the main toner compartment. Plug in the power cord and power on the printer.

Loading Media

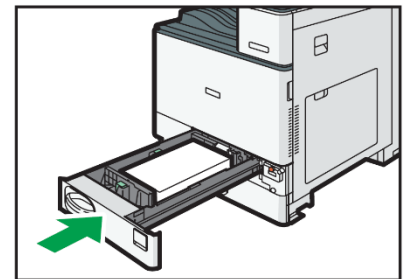
1



2

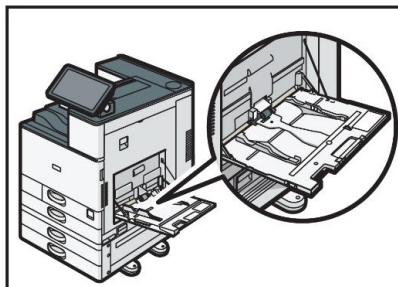


3

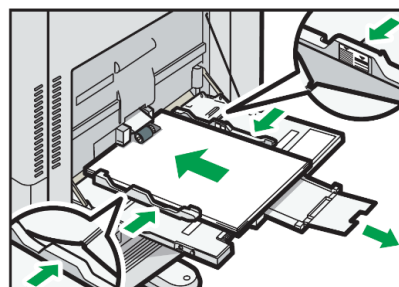


- If using tray 1, open the paper tray and load media with the print side face up
- Ensure the media locks in underneath the guides before closing the cassette.
- Ensure the paper stack does not exceed the upper limit mark inside the paper tray.
- ⚠ Excess stacking can cause paper jams.
- Be sure to load more than a few sheets in this tray, or multiple sheet feeding may occur.
- Straighten curled or warped media before loading.
- Various sizes of media can be loaded – simply adjust the positions of the side fences and end fence to match. Once loaded, carefully push the paper tray fully in.

1

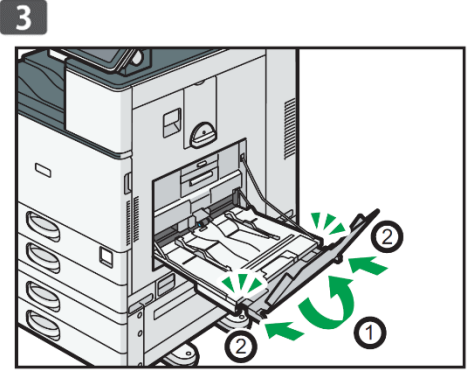
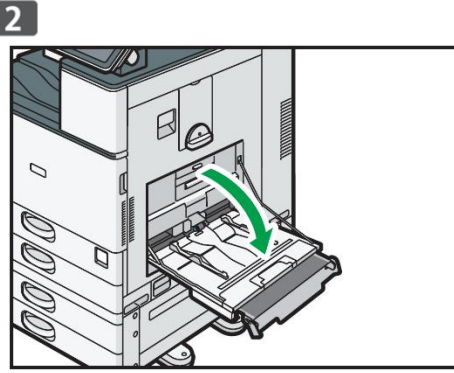
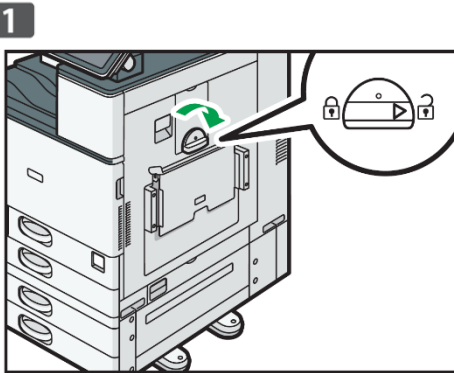


2



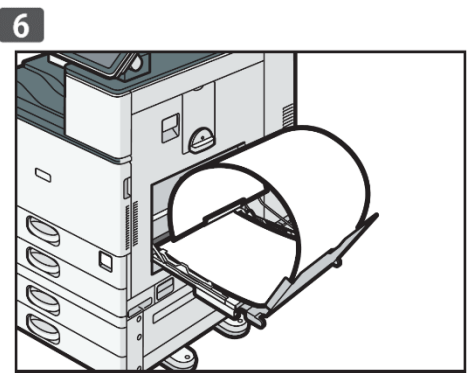
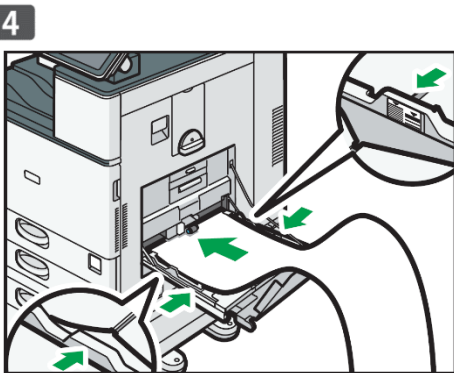
- If using the bypass tray (suggested for transfer media), load the media face down until you hear a beep and align the media guides to match the media size.

Loading Banner Media (optional feature)



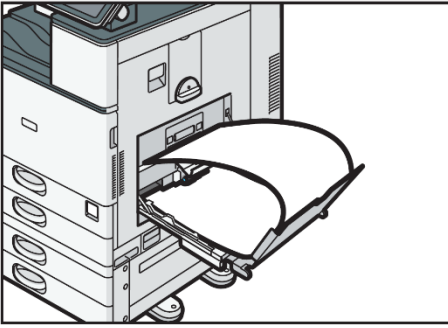
It is possible to feed banner media manually. However, it is recommend to purchase the optional banner media tray for higher volume printing.

- To open the banner media tray, turn the lock knob clockwise until its triangle mark stops at the unlock mark. Be careful that your hand does not hit the banner paper guide tray when turning the knob.
- If you cannot turn the knob, turn it while pushing the banner paper guide tray toward the machine.
- Hold the handle in one hand while supporting the back of the bypass tray with the other hand, and then open the bypass tray slowly.
- Open the bypass tray until it is parallel to the floor. Raise the banner paper guide tray, and then insert it into the bypass tray until it becomes stable.

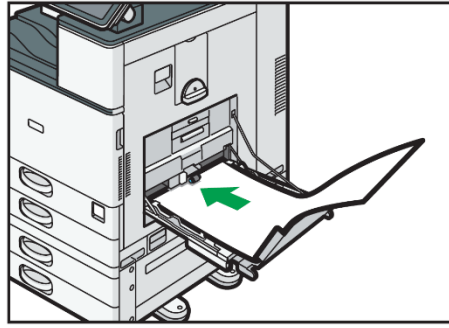


- Load the paper face down until you hear the beep.
- Align the paper guides to the paper size. If the guides are not flush against the paper, images might be skewed or paper misfeeds might occur.
- Open the subtray, and then raise the minor banner paper guide tray. Set the leading edge of the paper according to the paper size.
- When using paper that has a horizontal width of 1,200 mm (47.3 inches), curl the paper so that its leading edge touches the minor banner paper guide tray.

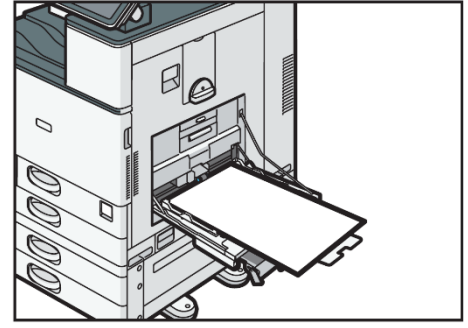
7



8



9



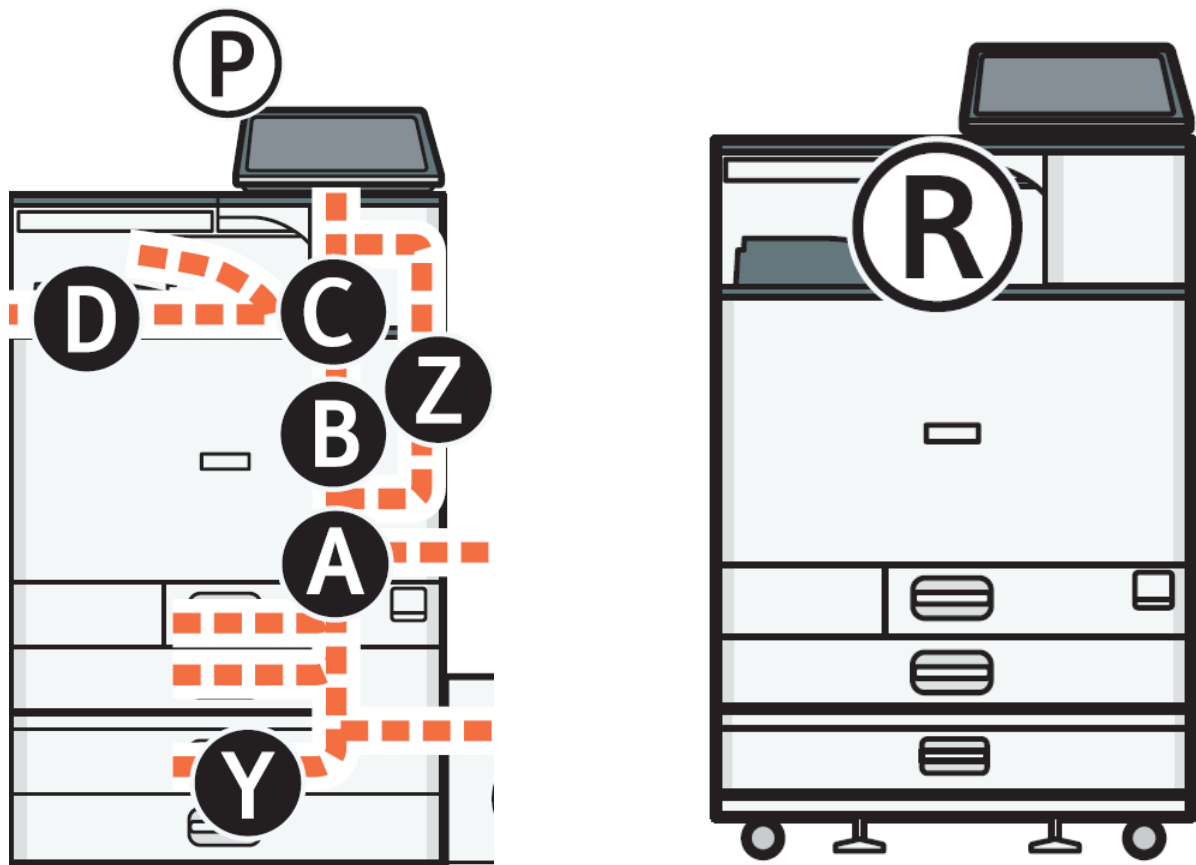
- When using paper that has a horizontal width of 900 mm (35.5 inches), curl the paper so that its leading edge touches the side of the machine.
- When using paper that has a horizontal width of 457.2 – 900 mm (18.00 – 35.5 inches), set the paper so that its leading edge protrudes from the banner paper guide tray.
- When using paper that has a horizontal width of 148 – 457.2 mm (5.83 – 18.00 inches), set the paper as loading paper into the bypass tray.
- You can load up to 10 sheets of paper that has a horizontal width of 457.2 – 1,260 mm (18.00 – 49.60 inches) into the banner paper guide tray.
- When loading multiple sheets of paper into the banner paper guide tray, be sure to load them as individual sheets and not in a stack.

Closing the Banner Media Tray

- Remove any paper that is loaded.
- Fold the subtray up.
- Slide the paper guides outward to the maximum width.
- Fold up the banner paper guide tray.
- Hold the handle in one hand while supporting the back of the bypass tray with the other hand, and then close the bypass tray slowly.
- Turn the knob counter-clockwise until its triangle mark stops at the lock mark.

Removing Jammed Media

- To prevent misfeeds, do not leave any torn scraps of paper inside the machine. If the error message remains displayed even after you remove misfed paper, fully open the front cover, and then close it.
- When removing jammed paper, do not touch the parts with a label indicating 'hot surface'.
- Do not remove the fusing unit. Doing so will result in loss of print quality.
- To remove paper that has not been fed into the fixing section correctly, remove the jammed paper through the underside of the fusing unit. If the jammed paper cannot be removed through the underside of the fusing unit, remove it from the top.
- If you are using the banner paper guide tray attached to the bypass tray, the paper loaded in the bypass tray may fall out when you remove jammed paper. First remove the paper loaded in the bypass tray, and then open the right cover.
- If a misfeed occurs, remove the jammed paper by following the procedures indicated in the animation that appears on the screen and the sticker or sheet inside the front cover.
- The misfeed inside the machine will correspond to the letter in the graphic below, displayed on the control panel.



IColor ProRIP Information and Installation



Use the IColor ProRIP software to print white as an overprint in one pass. This professional version is designed for higher volume printing with an all new interface. Design files can be printed directly from your favorite graphics program, as well as imported directly into IColor ProRIP.

The IColor ProRIP software allows the user to control the spot white channel feature, as well as spot color overprinting, where white is needed as a top color for textiles. No need to create additional graphics with different color configurations – the software does it all – and in one pass. Enhance the brilliance of any graphic with white behind color.

Print and Transfer onto:

- Natural and synthetic fabric (Light and Dark)
- Mugs and ceramics
- Light, dark and clear labels
- Leather
- Light and dark paper stock
- Glass
- Acrylic
- Wood
- Metal
- Window Cling
- Banners
- And much more!

Create unique items – The possibilities are endless!

- T-shirts and sweatshirts
- Aprons
- Corporate logo shirts
- Mouse pads
- Sports apparel
- Jackets
- Tote bags
- Tattoos
- And much more!

The most important point of the IColor ProRIP software is that it allows colors to be put down in layers. Regular printer drivers only concern themselves with what the eye sees on the top layer, the RIP allows you to separately control each layer, thus giving you the ability to control not only what you see, but what is behind that top layer (typically the white layer).

Print white as an overprint in one pass for reverse printing (typically used for transfer printing of textile and hard surfaces), where white is needed as an overprint, applied on top of all the other colors. When the image is pressed to the garment, the transfer sheet is flipped over and the white becomes the underprint. This is especially important where images have half tones and 100% transfer of the image can be problematic, or when there is white in the image that needs to show through on dark colored garments.

White toner performs the following functions:

- 1) To produce the color white on a dark garment.
- 2) To fill in the halftones on lighter images so that there is enough toner on the page to fully transfer to your garment or to pull all the B adhesive.

This second point is the most important one and the reason why you cannot simply use a CMYK printer for transfer printing. Also, this is why you **MUST** use the color white all the time (assuming your image has some halftones in it). Even when printing on a white garment and there is no white at all in your artwork. This is the biggest misconception with new users.



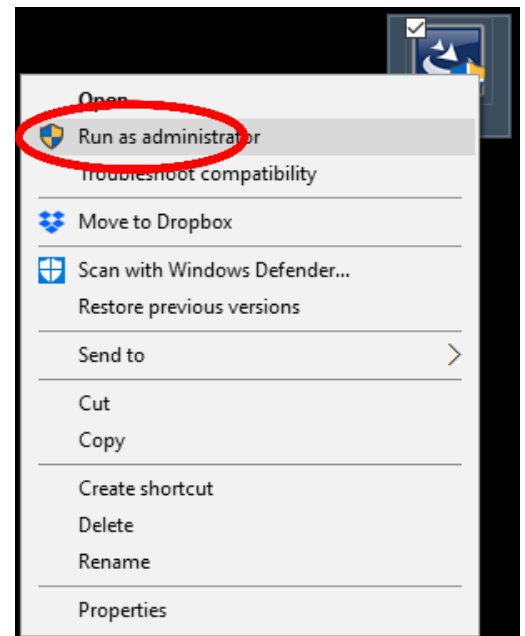
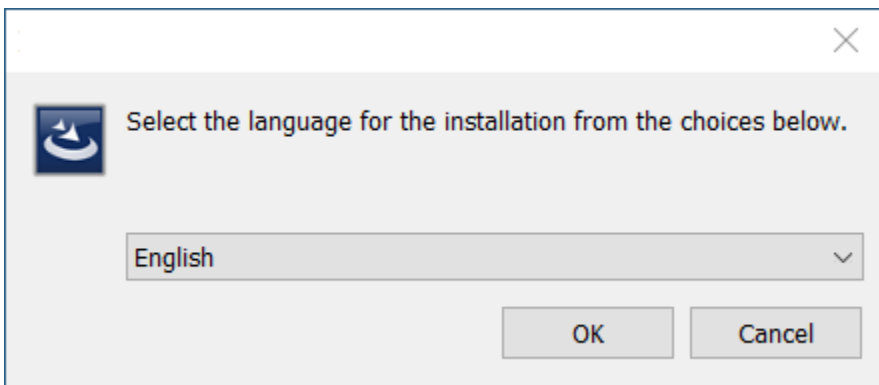
Don't make that mistake, always use the white toner cartridge!

ProRIP Software Installation

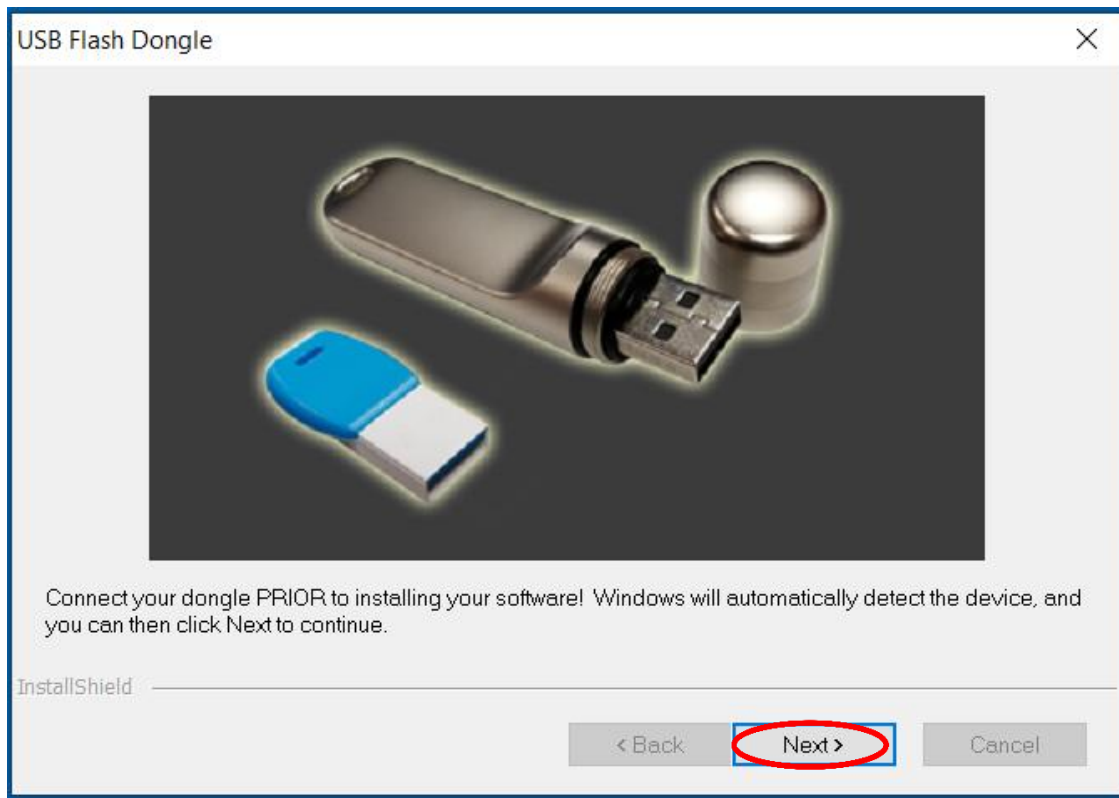
- Make sure all other programs are closed and virus software is disabled.
- Plug in the included dongle into a free USB port on your PC. This dongle contains all of the software, manuals and documents for your printer and software and also serves as your license key.
- The use of a dedicated printer driver is not provided, nor is it necessary. The ProRIP software contains the driver for this machine, and all printing should be done directly from the ProRIP software.
- You have the choice of using the following connections: USB, Wired Network or Wifi (optional with the purchase of the IColor wifi add on card).
- For front panel internet access, wifi is standard and should not be confused with printing via wifi. It is not necessary if running the printer via wired network.
- NOTE: It is suggested to copy all of the installation files located on the USB drive to a folder on your computer for safe keeping and ease of installation.

⚠ The IColor ProRIP dongle must be installed at all times when installing or running the program.

- 1) Install the included dongle into a free USB port on your PC.
- 2) Navigate to the RIP setup folder on the dongle and right click the setup file and select 'Run as Administrator'.
- 3) Run the Installation.
- 4) Select the desired language for installation and click 'OK'.

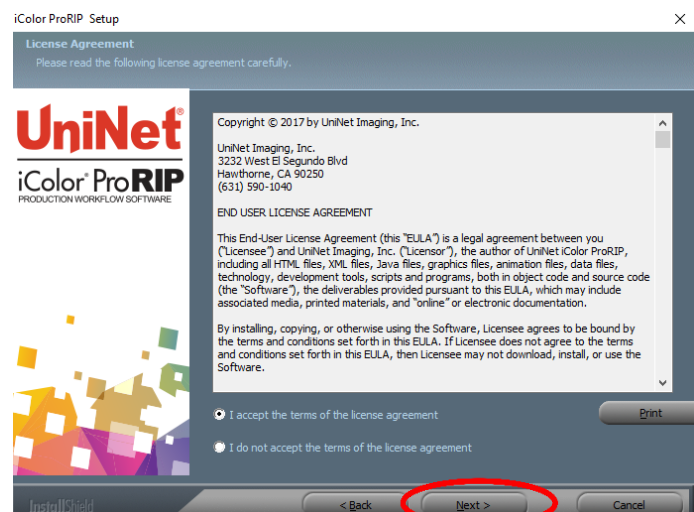
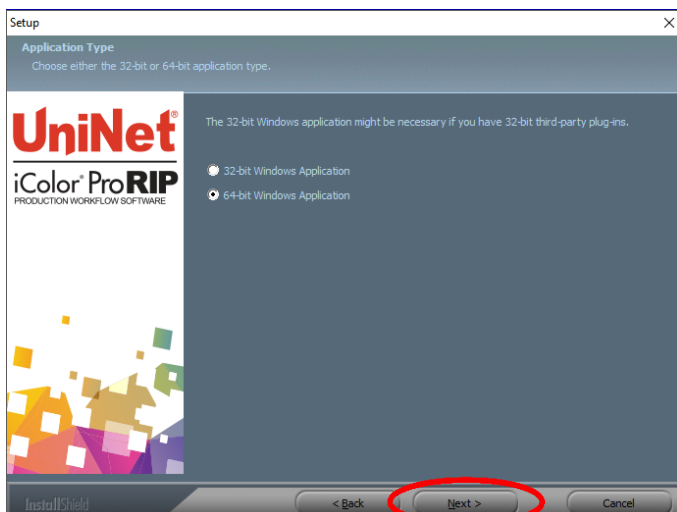


- 4) You will be prompted to insert the USB dongle before proceeding with the installation. If already inserted, click 'Next'. (There is only one dongle shipped with your system, and can look like either of the types represented below).

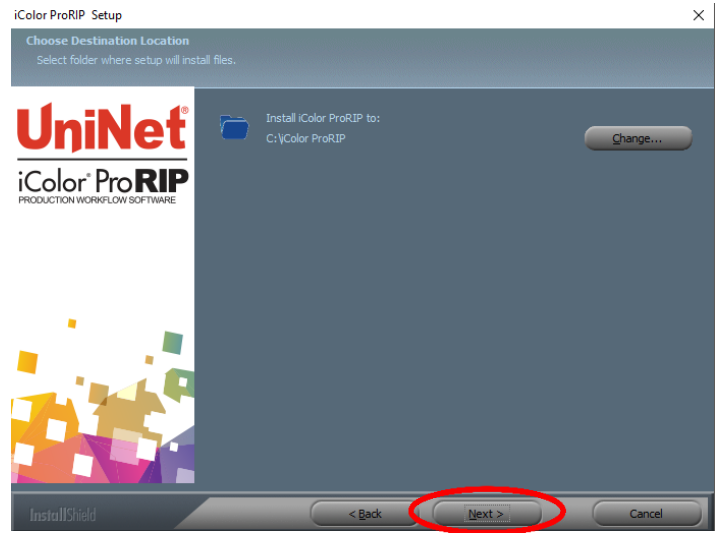
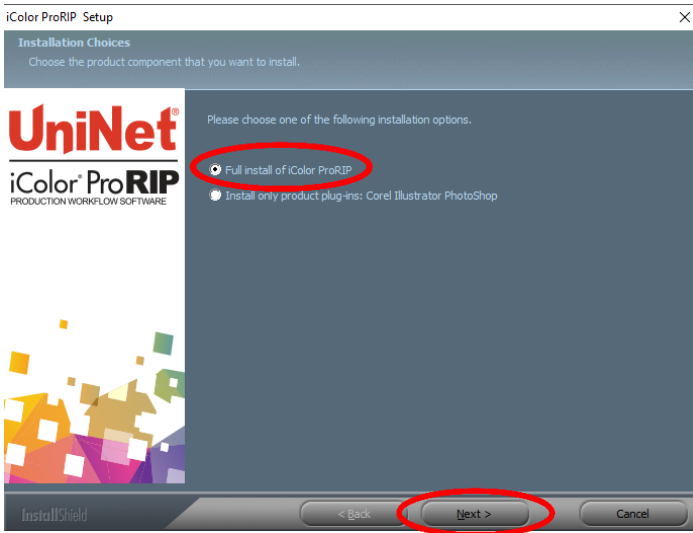


⚠ This USB dongle is your license key. Ensure that it is not lost or broken, as UniNet cannot replace it without a charge. You cannot use the software without it installed in your PC.

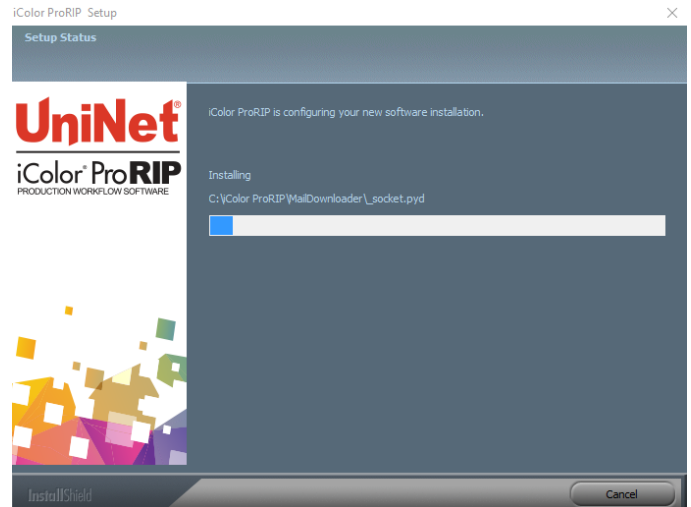
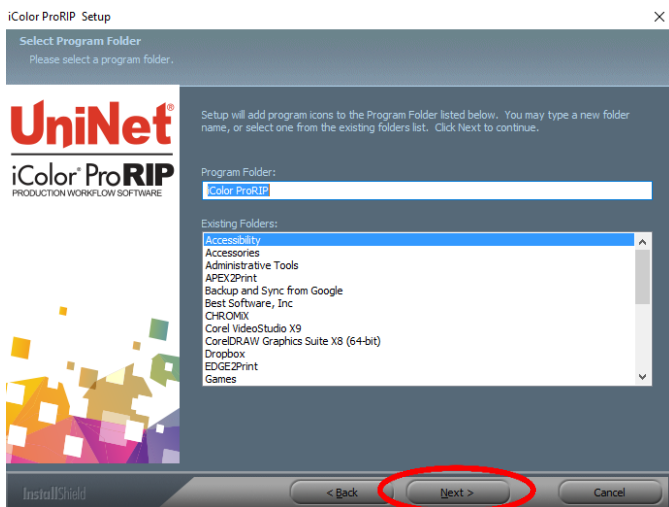
- 5) Select either the 32 bit or 64 bit application (dependent upon your version of windows). Accept the terms of the license agreement and click 'Next'.




6) Choose 'Full install of IColor ProRIP' and click 'Next'. Click 'Next' again to accept the installation folder.

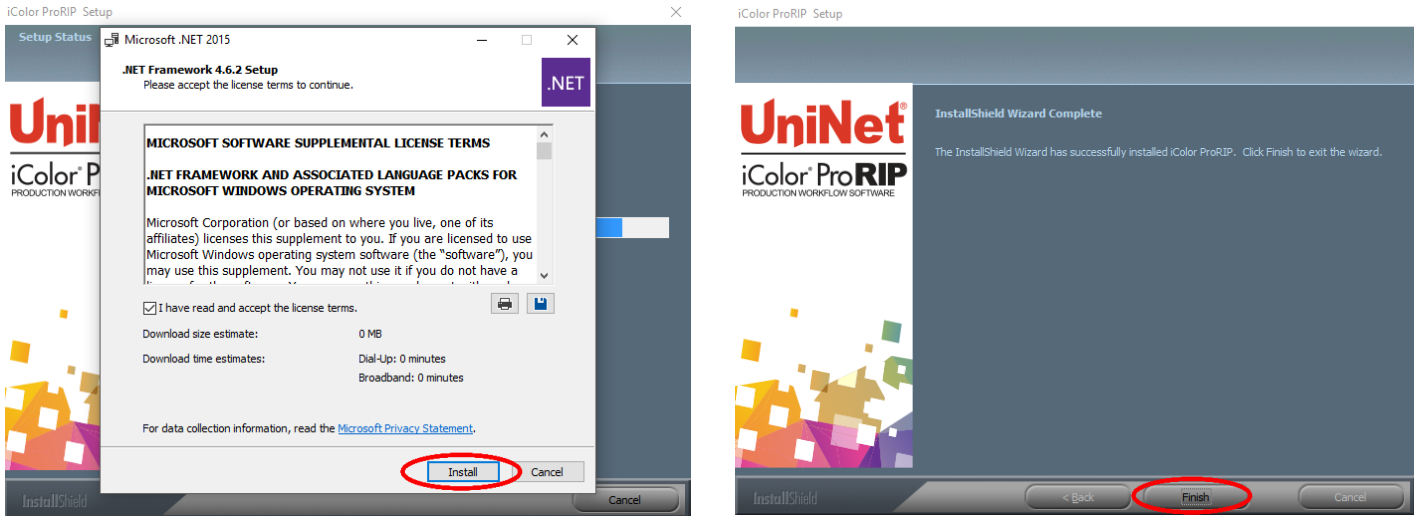


7) Click 'Next' to allow the creating of the IColor ProRIP Program Folder and the installation will begin.



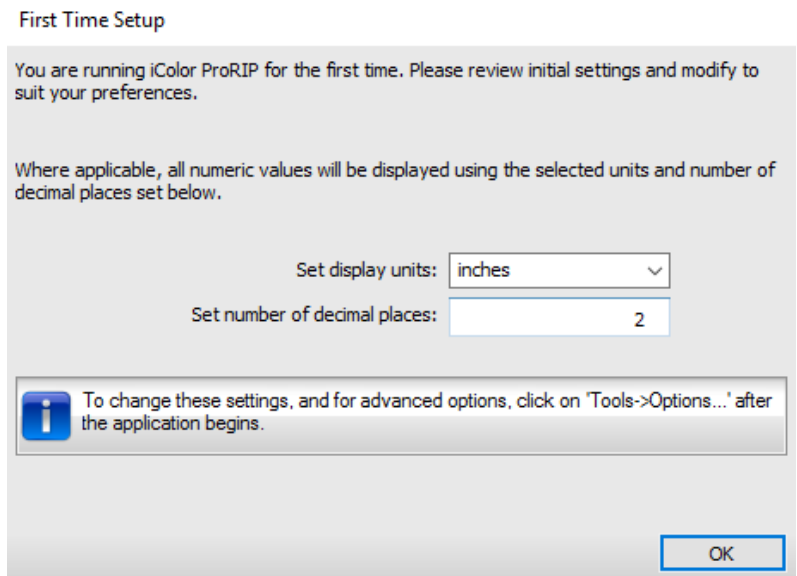
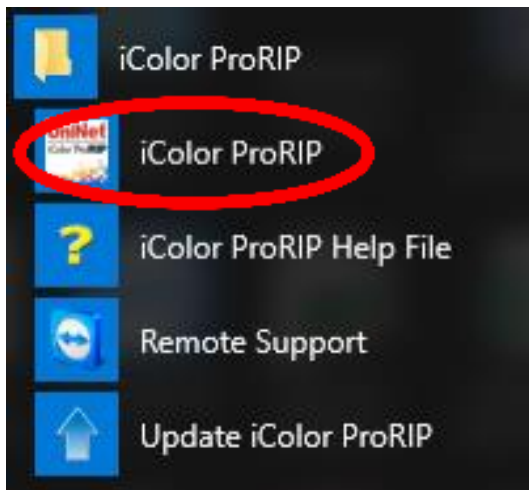
8) If not already installed, you will be prompted to install .NET Framework, which is a necessary component to the ProRIP software. Accept the license terms and click 'Install'. Once the InstallShield Wizard is complete, click 'Finish'.

 This installation normally takes several minutes to complete.

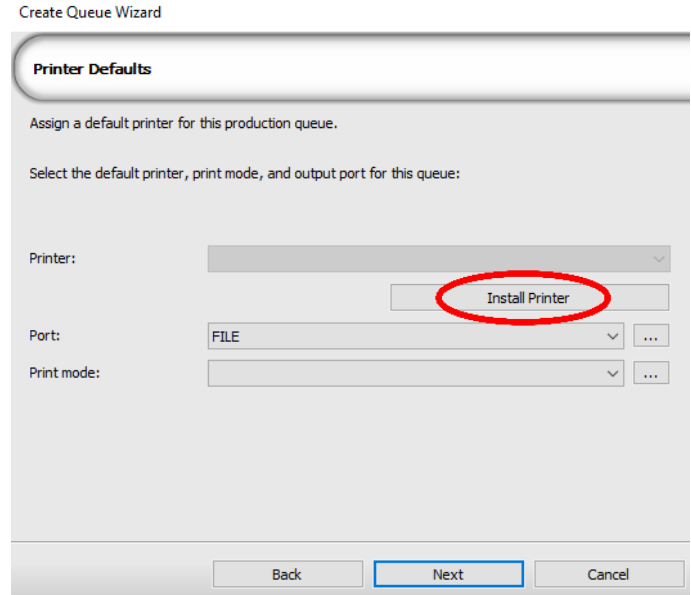
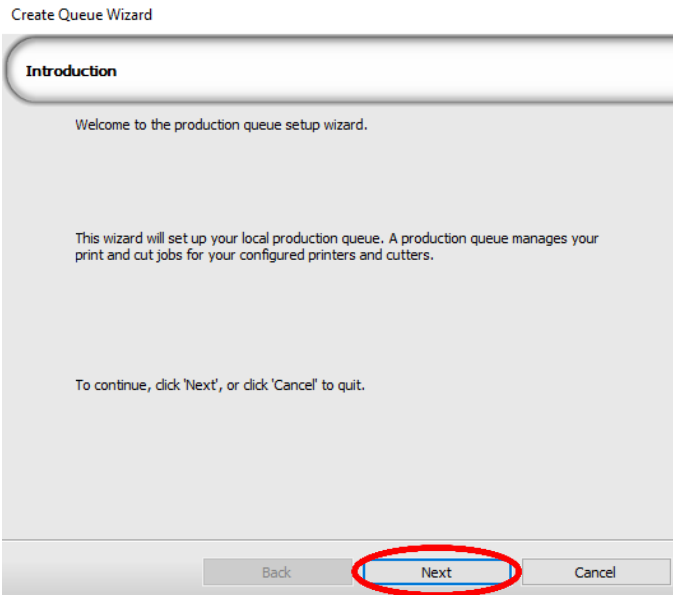


ProRIP First Time Setup

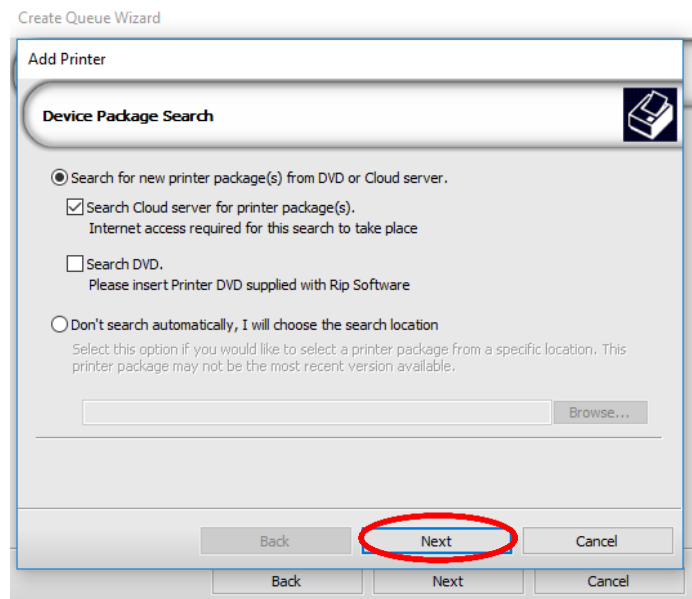
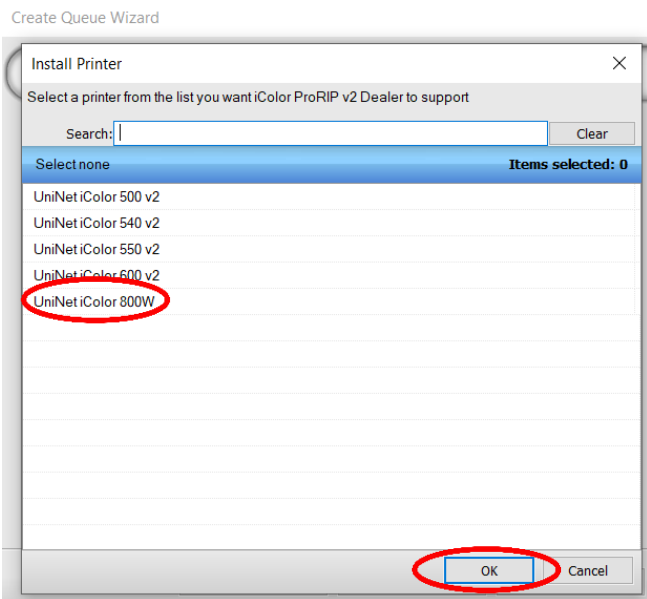
- 1) Be sure the IColor ProRIP dongle is installed and you are connected to the internet.
 - From the Windows Start menu, choose **All Programs >> IColor ProRIP** or double click on the desktop icon that was created upon installation. Launch the program.
 - Create a shortcut if desired for quicker access later.
 - Confirm first time setup by setting your preferred unit of measure and decimal places. This can be changed later under **Tools >> Options**.



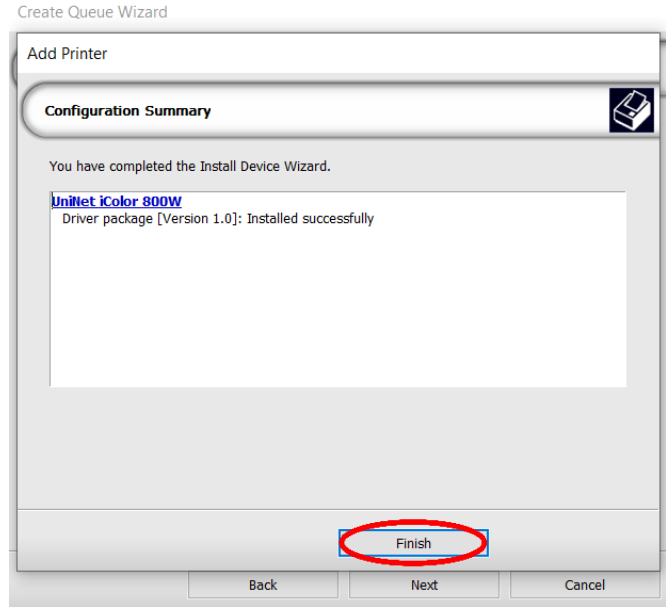
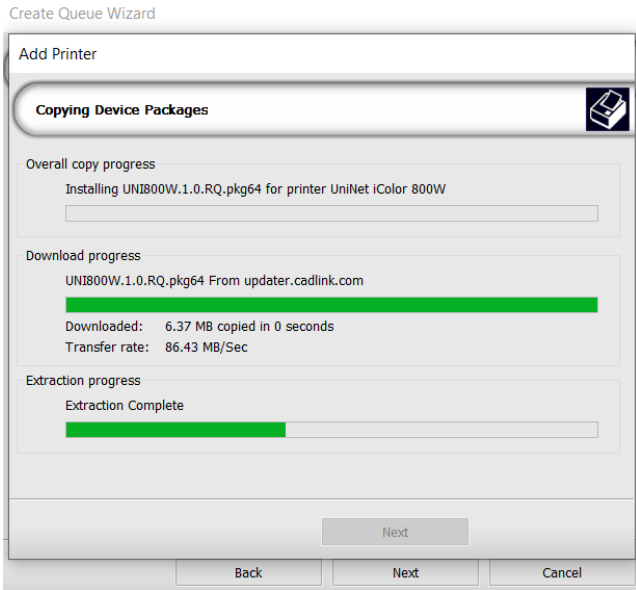
- 2) Once the ProRIP opens, the Queue Wizard will begin the installation of the support files for your IColor printer. Click 'Next' and then 'Install Printer'.



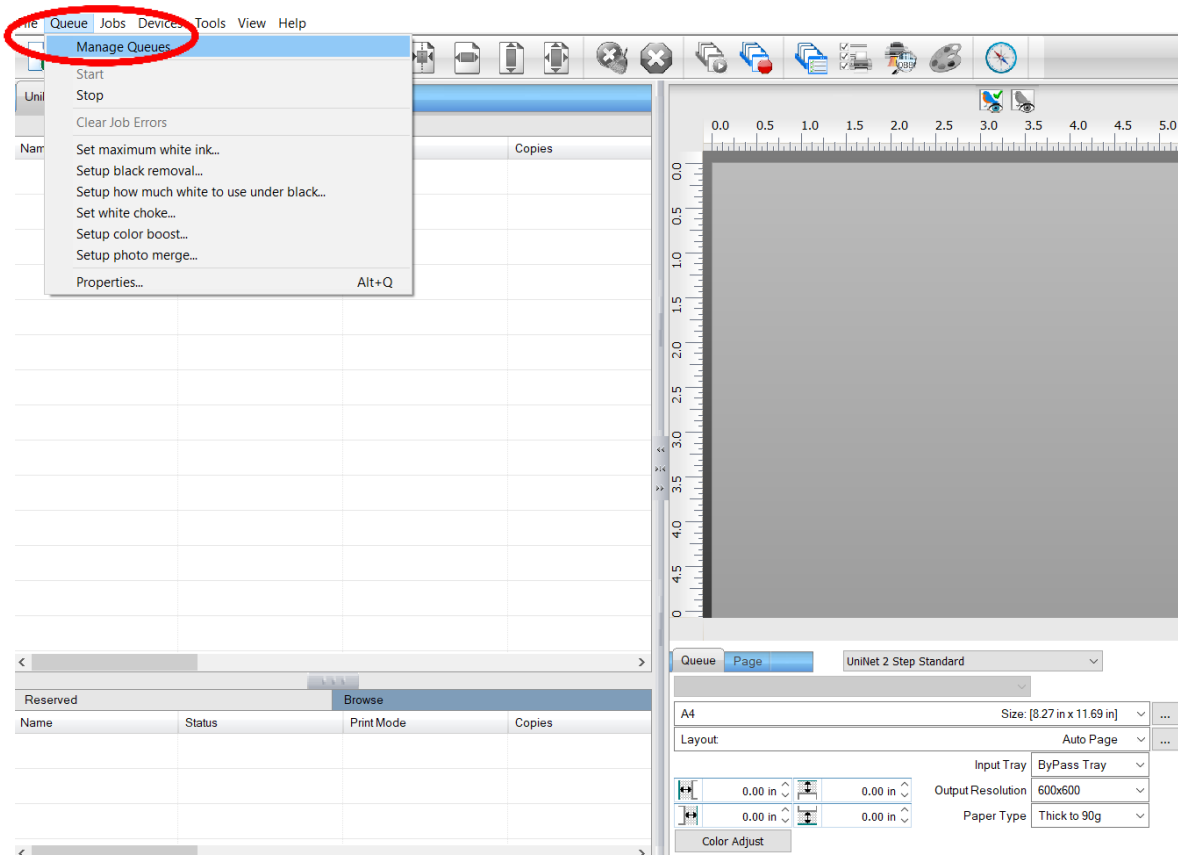
- 3) Select the appropriate printer from the support menu (in this case, choose the IColor 800W). Click 'OK'. Then click 'Next' to continue the installation.



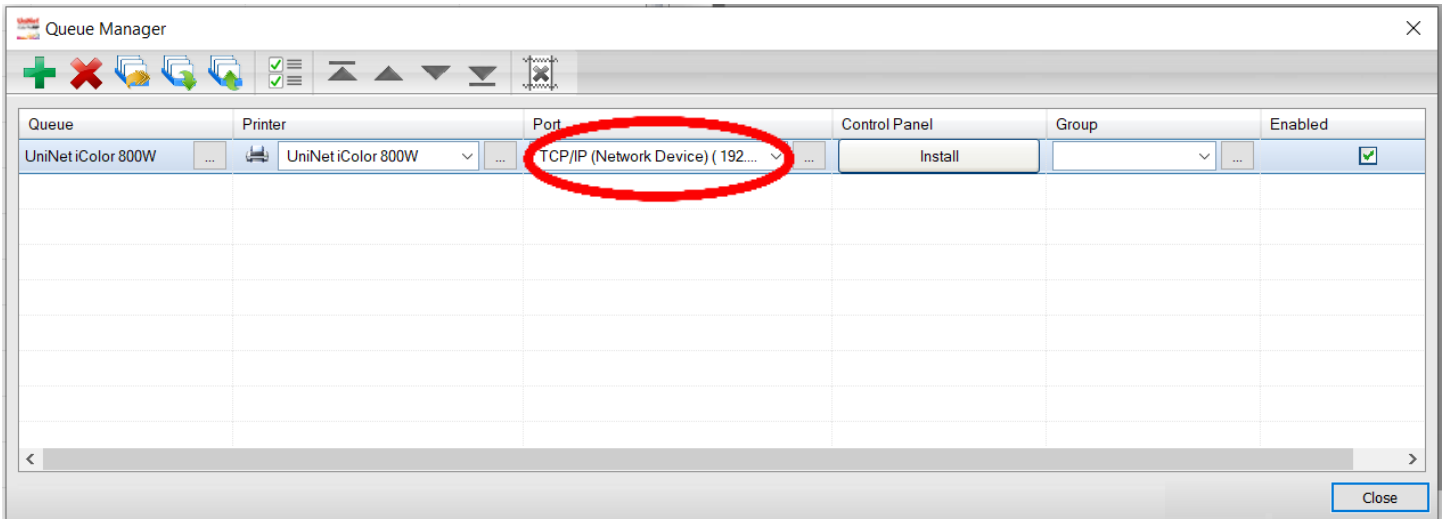
4) Click 'Finish' to complete the installation and **continue to step 5 or you will not be able to print.**



5) Click **Queue >> Manage Queues** to set up your printer for each of the preset queues.



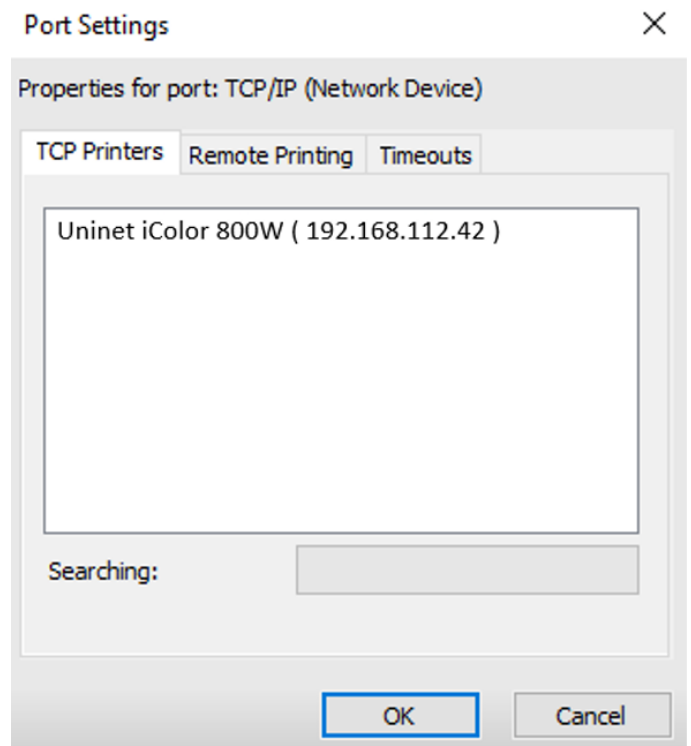
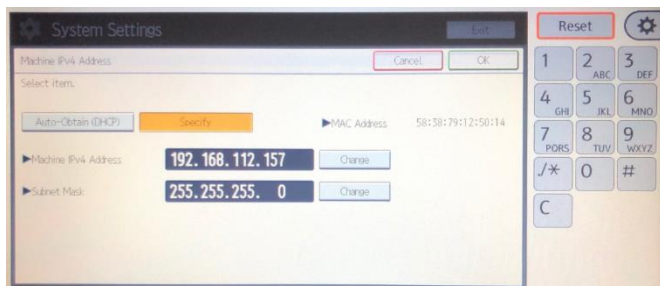
- 6) In the 'Port' drop down menu, chose the proper port. If connected via network (recommended), choose TCP/IP. If connected by USB, choose the printer as identified in the drop down. All other ports will update automatically, it is only necessary to do this for one queue.



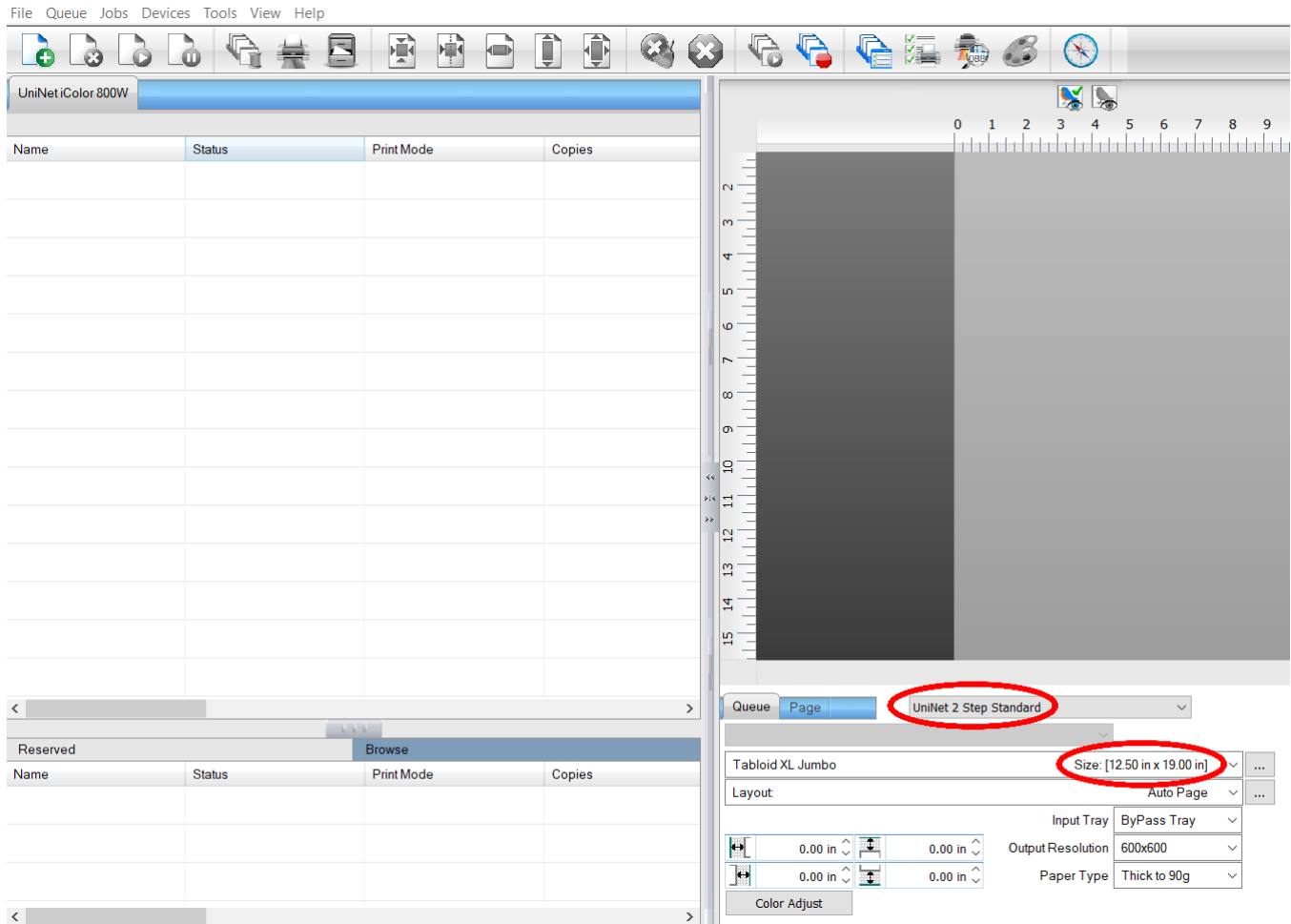
- 7) If connected via network, once TCP/IP is selected, the software will poll your network for available printers.
- Select the proper IColor printer. Note that the IP address of the printer is displayed.
 - Be sure to set a static IP address for your printer so that the IP address does not change later. If this happens, you will have to repeat this step.

Setting a static IP:

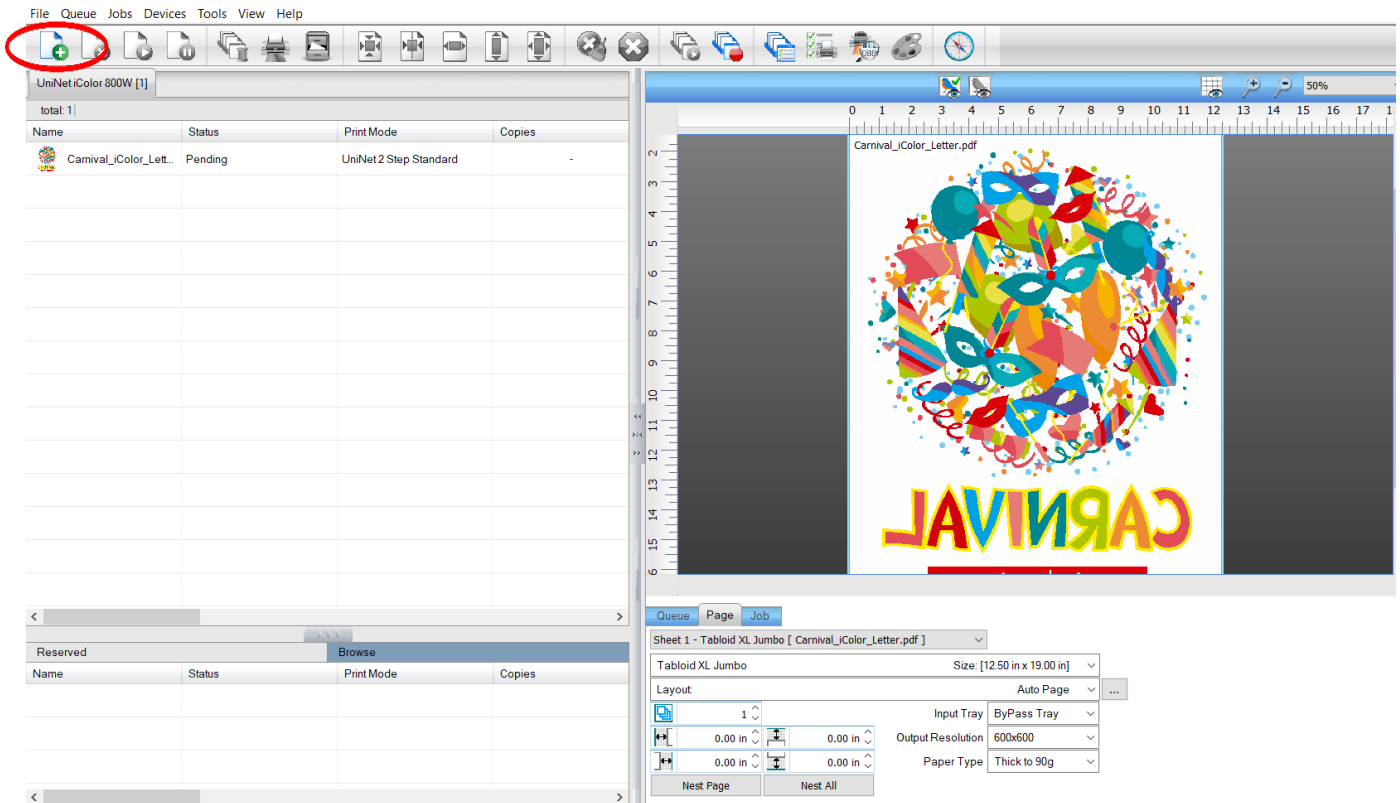
On the LCD screen of the printer, click **User Tools>>Machine Features>>System Settings>>Interface Settings>>Machine IPv4 Address**. Click 'Specify', then you can manually add your desired IP address. Once complete, click OK and exit.



8) To begin, select the media type and the size you wish to use under the queue tab at the bottom right of the screen. The input tray and paper type will be automatically set based on the media selected. UniNet suggests that you do not alter these settings.

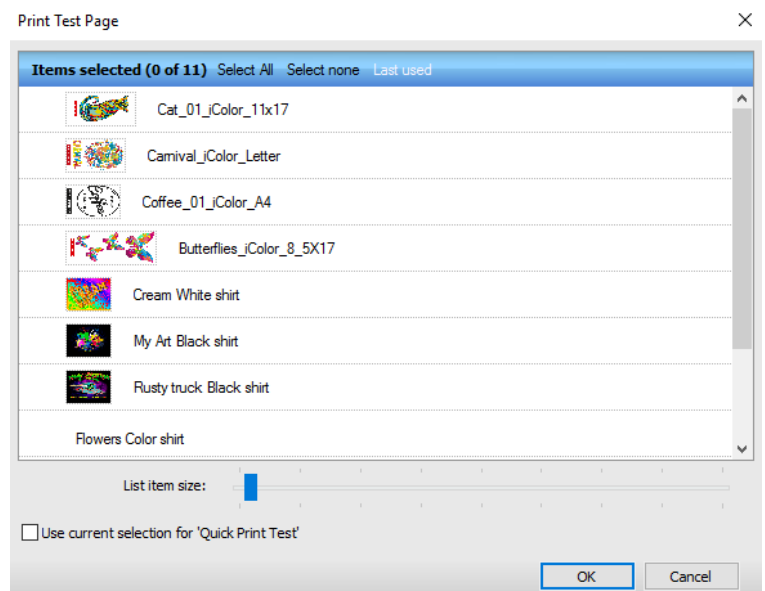
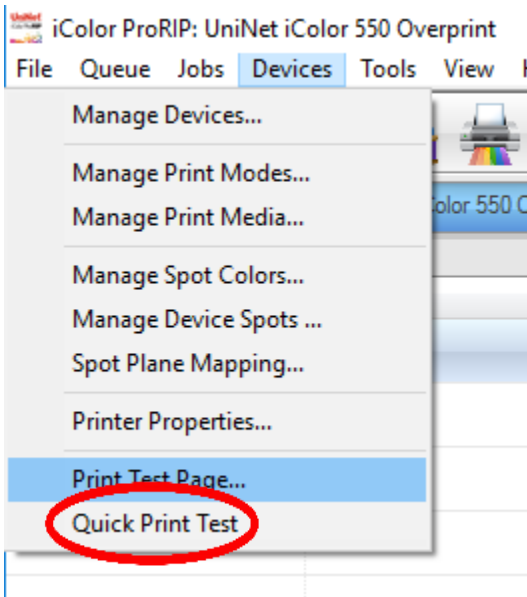


9) Import the desired graphic by clicking the 'green plus' icon and navigating to the proper folder. You can also import by clicking **File > Import File**, or simply dragging and dropping your file into the queue.



10) Note - There are preloaded images that can be used to print a test page.

- Click **Devices >> Print Test Page** to see the choices. It is suggested that you print a test page upon completion of the setup to confirm the printer has been properly installed. Use [Shift] and [Ctrl] to click multiple pages), and then click OK.
- More about the uses of each page can be found in the Help Topics file within the ProRIP program.



Using the ProRIP Software (Summary)

Once your image is loaded, take note of the preconfigured settings relating to the media being used in the printer.

The 'Queue' tab shows the size of the media that will be used, where to load the media into the printer and the paper type setting recommended.

Each media type will contain this preconfigured data to make your printing experience as easy as possible. Overriding these settings could result in undesirable results.

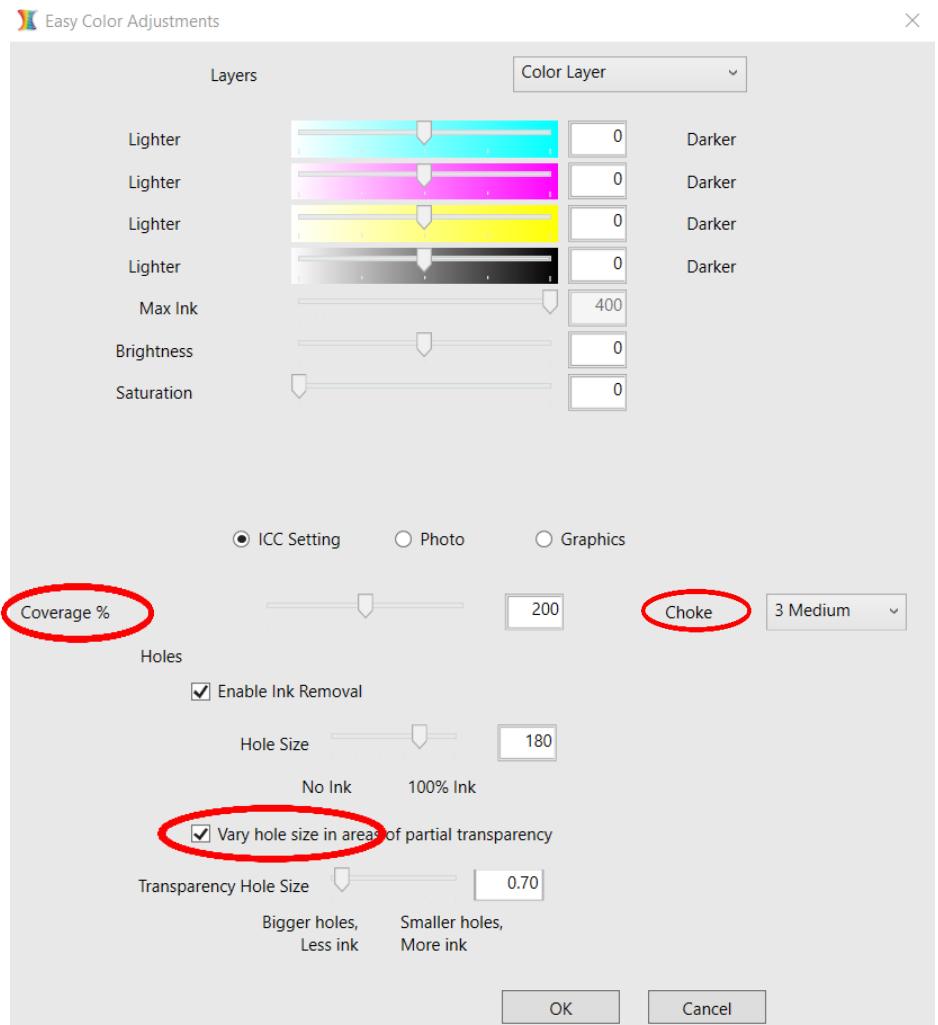
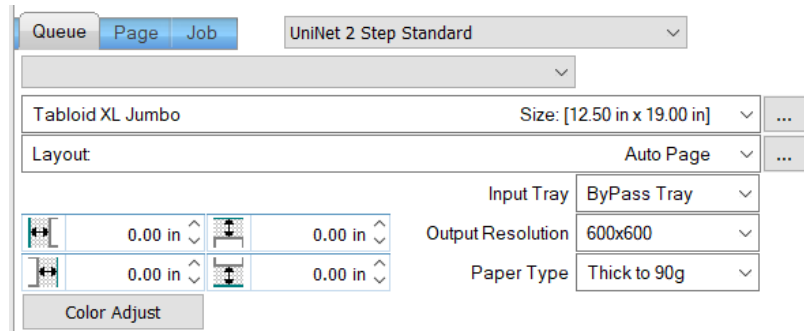
To alter the color settings, click on 'Color Adjust' and adjust as needed.

'Coverage %' represents the amount of white/clear toner overprint or underprint (depending on which queue is being used).

The 'Vary hole size in areas of transparency' option allows for rasterization of colors that fade into nothing and to retain partial transparency.

It is suggested that this option is left on, as it will only apply itself where it's needed.

Choke dictates how much the overprint white layer is 'pulled in' under the colors. The higher the number, the more effect it has (to avoid a white outline around your graphic).



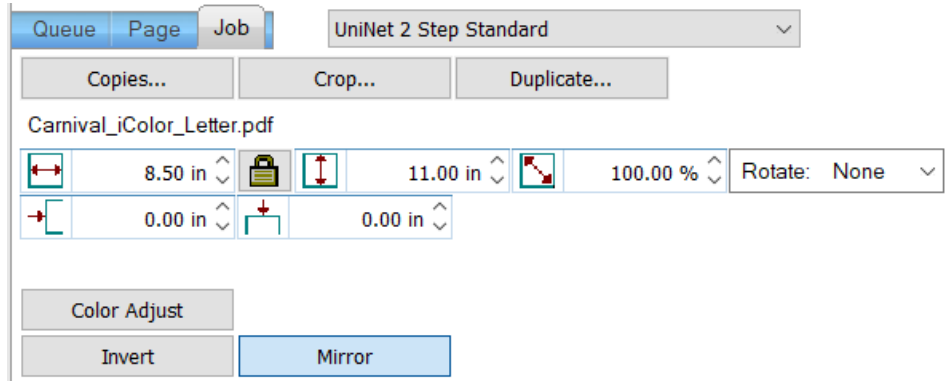
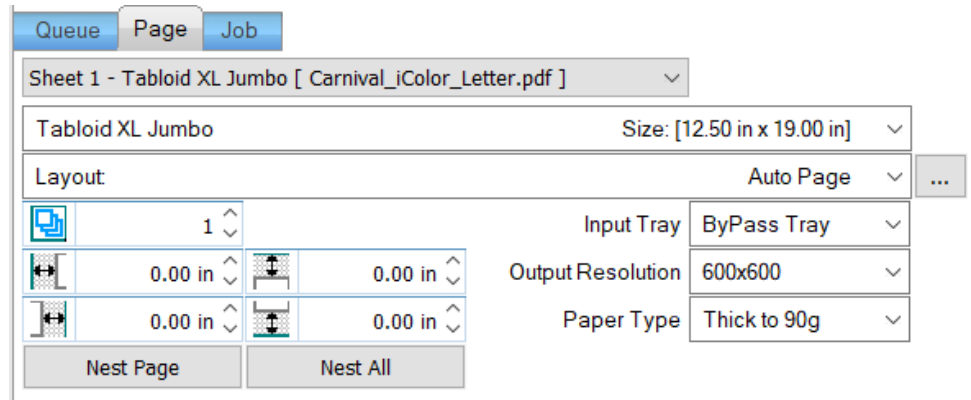
The 'Page' tab offers the ability to print multiple copies and nest images.

You can also adjust the size of the image to fit your media here (and in the Queue tab).

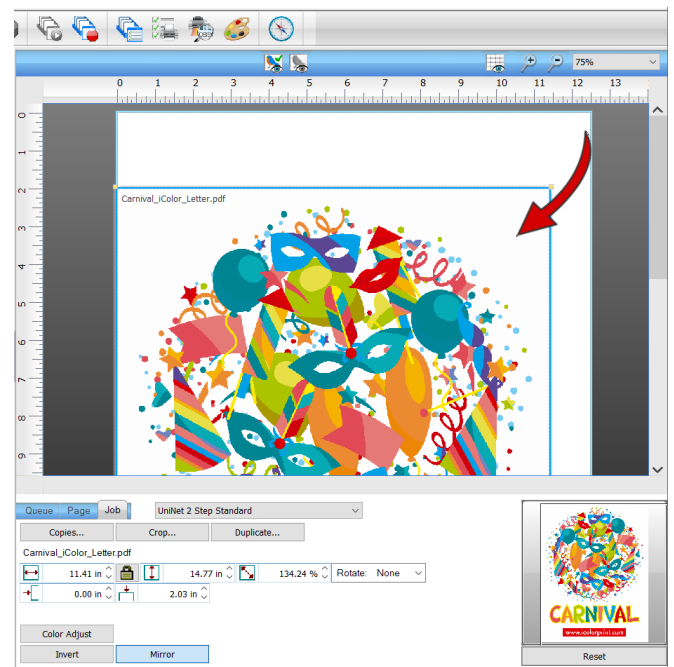
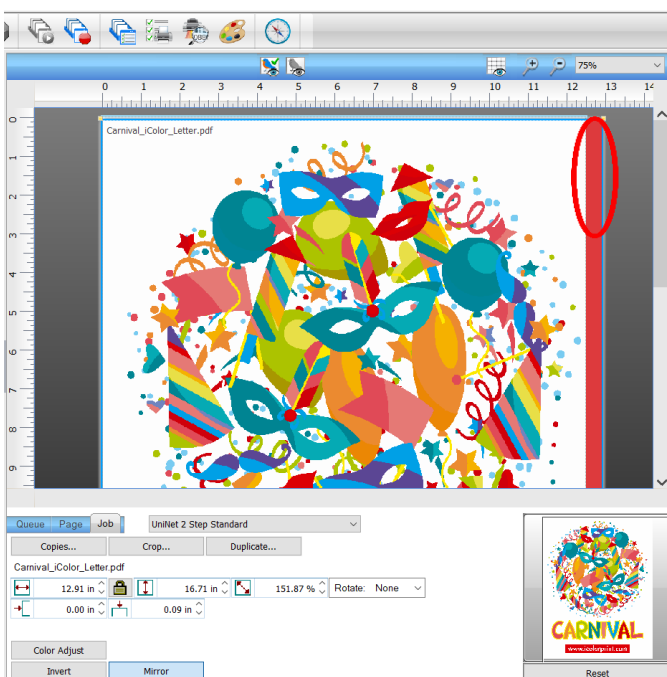
The 'Job' tab allows you to lock the proportions of your image to maintain the aspect ratio.

Here you can also mirror, rotate and invert the image.

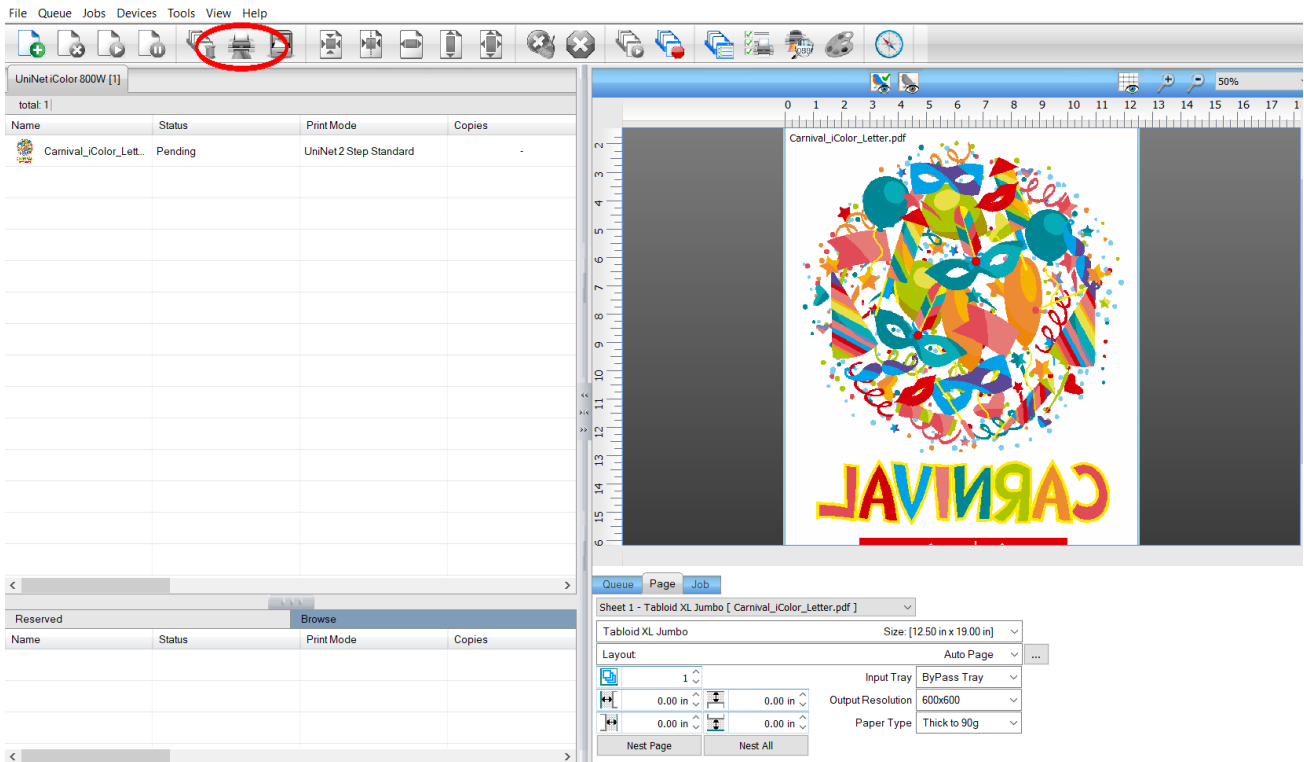
Note that the mirror function is automatically on for any image loaded into the overprint queue.



- You can also adjust the size of any image by dragging and dropping the corner of the image in the preview pane.
- In this example, where we have a letter sized image placed on an A4 artboard, the red bar to the right of the image represents the portion of image that is outside the print margins. Be sure to resize to eliminate this bar before printing.

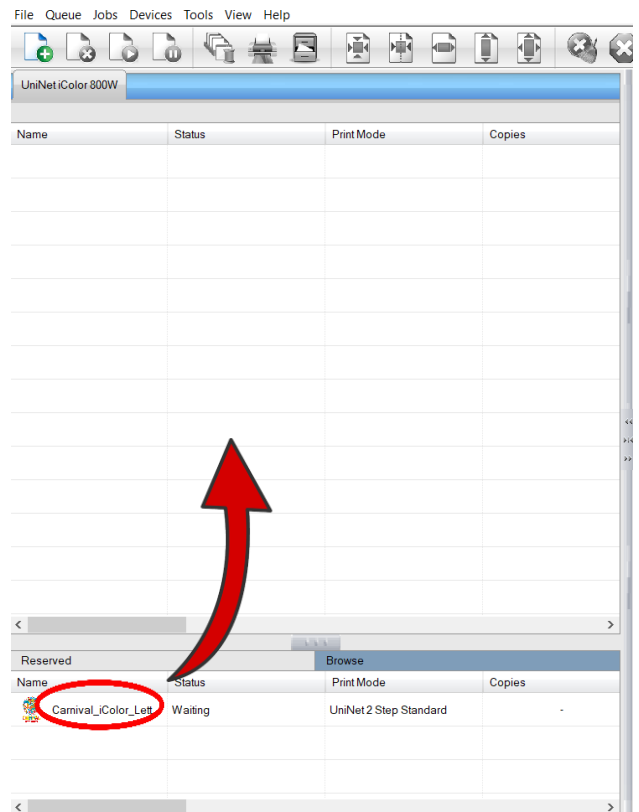


When ready, click the 'Print' icon to print your graphic.

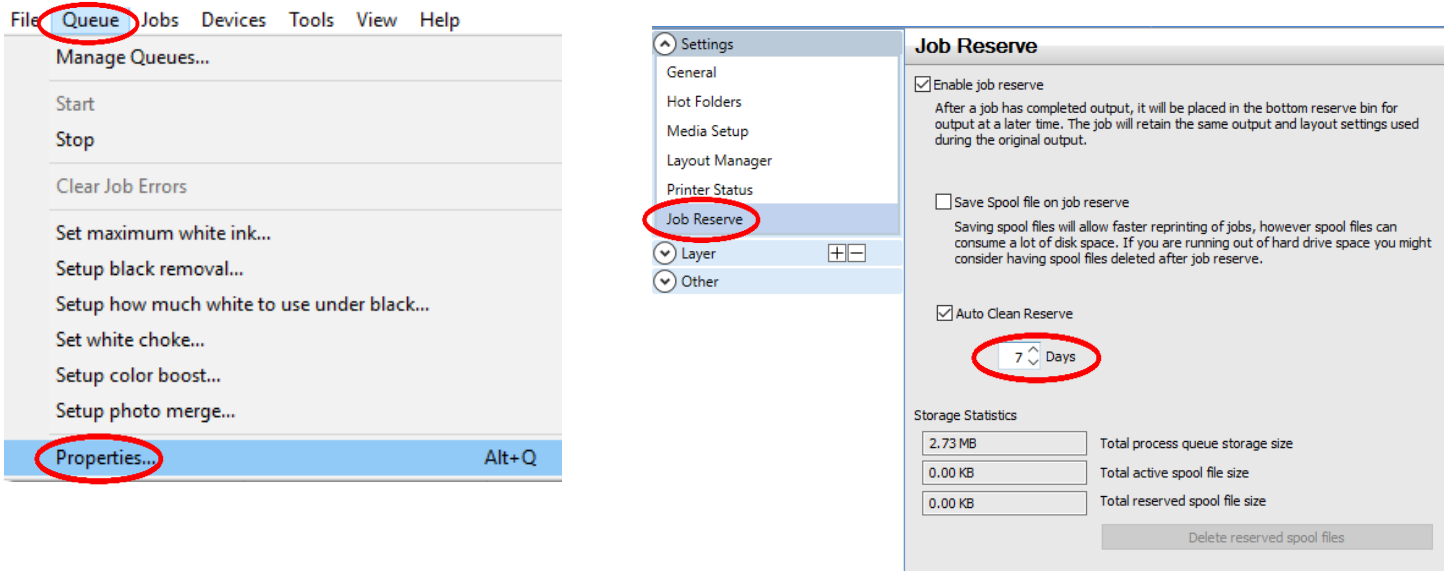


⚠ If you encounter a 'Port Failed to Open' error, please refer page 18, step 6 to set the proper port in Queue Manager

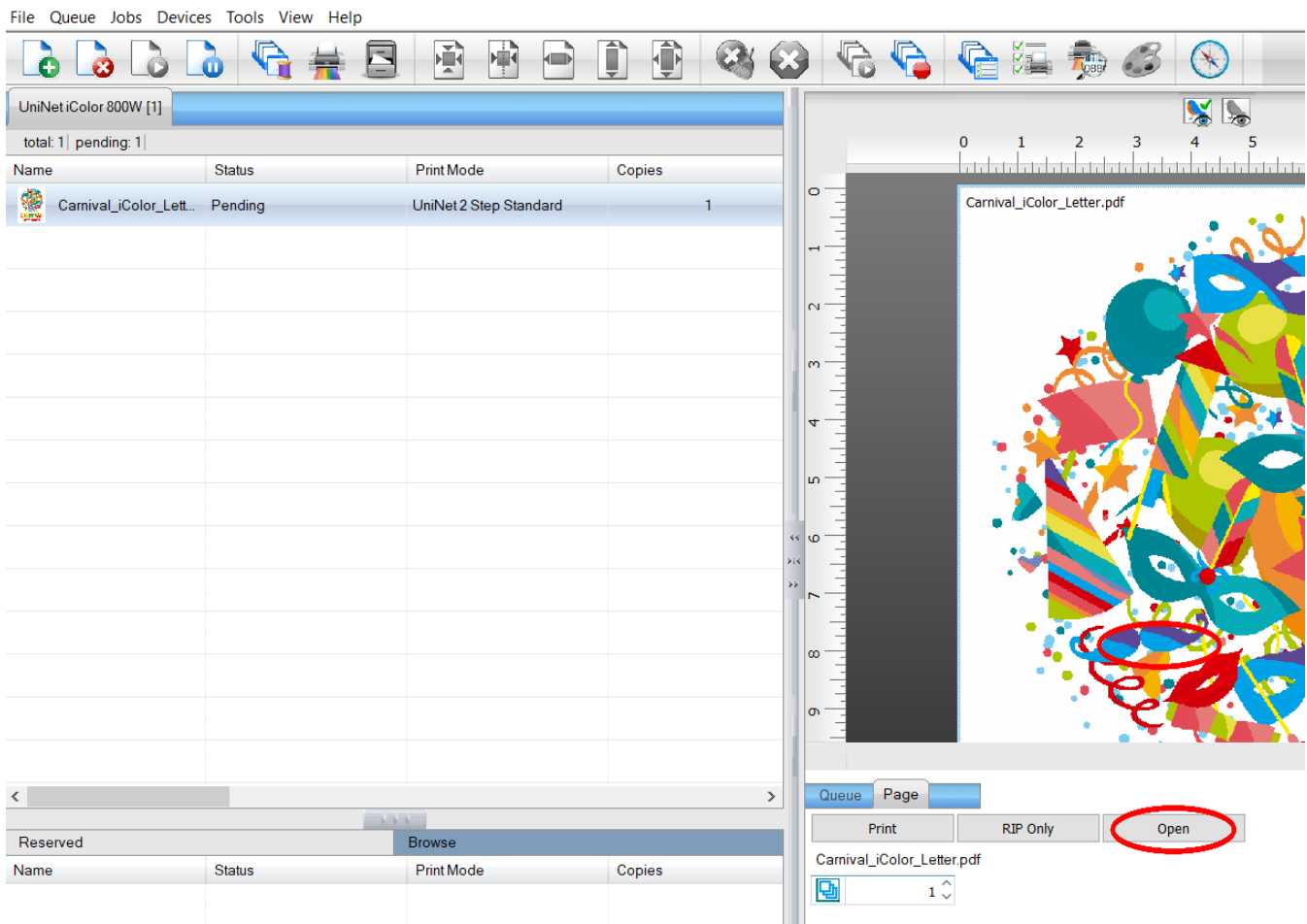
- Once the print has completed, the job will be archived in the reserved area for 7 days. If you wish to reprint that job, drag and drop the job from the reserved section into the queue.



- To lengthen the amount of time a job stays in reserve, click **Queue>>Properties**. Then click 'Job Reserve' and set the 'Auto Clean Reserve' time frame. Uncheck to keep jobs in reserve forever.



- After a particular job has printed, it will be 'closed'. This means that it was rendered by the software so that the next time you print, the processing time will be minimal.
- If you need to make any changes to the print job before printing, you must 'open' the job.



For more detailed instructions for the IColor ProRIP software, please consult the IColor ProRIP User Manual.

Visit www.icolorprint.com/support for the most updated written and video instructions on the IColor ProRIP software.



About IColor SmartCUT

Easily print oversized images with UniNet's optional IColor SmartCut software. This ground breaking application turns your printer into a tabloid 'plus' capable machine, allowing for the splitting and splicing of one graphic across two or more printed transfer sheets.

Pick virtually any oversized graphic, and the software will split it in half along the most logical path. You can choose to have it split along dark or light areas, depending on the color garment you will be pressing onto. With this software, you can make 3XL shirts that are not possible with even the most expensive of printing systems because you can gang up as many transfer sheets as you want.

SmartCUT was designed from the ground up with ease of use as a paramount consideration. Most functions are automated to allow you to focus on finding the best starting point to split each job. The software supports most common image formats, with a preference for PNG files with transparent backgrounds.

The program works as an integral part of a decorating system where the split pages are printed onto IColor Standard and Select transparent transfer media. The sheets are then lined up visually on the substrate through the transparent sheet.

A tremendous amount of research and testing has proven the concept that using the method implemented in this application will produce results for a very high percentage of designs that are virtually imperceptible by even those who know that a seam exists.

If not purchased, your IColor printer shipped with a demo version of the software, to purchase the full version, contact your representative.

Use Genuine UniNet IColor Consumables

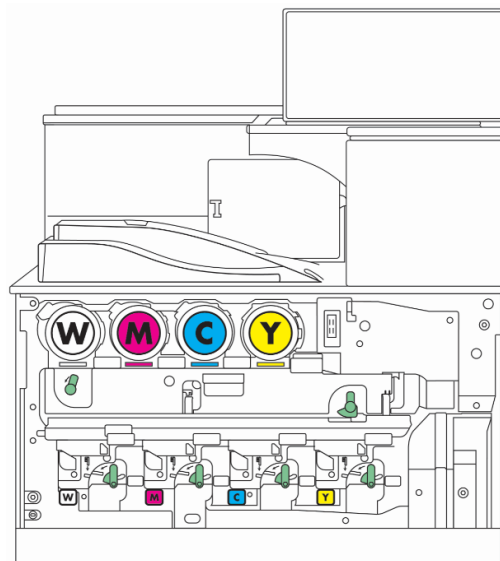
⚠ Use only genuine UniNet IColor consumables. The use of incompatible supplies (toner, drum, transfer belts, fusers and registration assemblies) may cause damage to your printer not covered by your warranty. Contact your dealer to reorder supplies.

⚠ Always replace toner and drum cartridges in the specified slot according to color or serious damage could result.

Replacing toner and drum cartridges

Supplies Replacement Guide

Printer Display Reads:	Replace with:
Cyan low/out/empty	Cyan
Magenta low/out/empty	Magenta
Yellow low/out/empty	White
Black low/out/empty	Yellow



TECH TIPS

There are many variables that could produce different results. Specific steps may need to be altered based on:

- Type and brand of Heat Press: The temperature and duration varies slightly based on the heat press being used. All instructions are based on using a Hotronix Fusion press. Clam shell and other types of swing away presses may also yield different results.
- Type of image: Photos or full color graphics may require a longer press time than vector images or text.
- Type of garment or substrate: Cotton, Polyester, and Spandex material all respond differently to heat, as do hard surfaces like acrylic or wood. All textile instructions are based on cotton garments.
- Toner Coverage: Halftones in image may cause undesired results. Toner coverage should not be less than 70%, otherwise there will be issues with transferring the adhesive to the transfer sheet.

Halftones can be corrected by printing white on top of color using the IColor ProRIP Software to apply a white layer in one pass. This will help with toner coverage and proper adherence to the garment.

- For best and darkest blacks, UniNet suggests setting your colors to 100C/100M/90Y). This will avoid brownish to yellowish black.

Consult the IColor knowledge base for specific instructions on a variety of transfer paper offered at:

<http://www.icolorprint.com/support>

Technical Support Email: Log a ticket at <https://www.icolorprint.com/get-support>

Technical Support Phone: 631-590-1040, Option 2

About UNINET

UNINET is a worldwide Original Equipment Manufacturer with over 25 years of experience in the imaging industry. With sales, service and distribution networks on every continent, we have earned a global reputation for high quality products and customer service.

The UNINET IColor Digital Color + White Transfer Media Printers feature full color plus white, combined with true black printing - a unique and low cost digital solution for the short to mid run market. With the most opaque white toner available, users can print on black, dark and clear media or garments in vibrant, colors + white. Imagine custom T-shirts, sweatshirts, hard surfaces, invitations, menus, stationary, promotional items, labels, banners, and more which include full color and brilliant white!

Add our optional specialty toner kits to produce fluorescent colors, security documents, clear watermarking and even dye sublimation prints, all in the same printer! What's more, our exclusive IColor TransferRIP or ProRIP technology allows you print white as an overprint or underprint in one pass!

Also available:

IColor 2-Step *Premium* and *Premium STRETCH* Transfer Media for light and dark colored garments

IColor 2-Step *Standard* Transfer Media for light and dark colored garments

IColor 2-Step *Select* Transfer Media for light and dark colored garments

IColor 2-Step **GLITTER** Adhesive Transfer Media (for use with IColor 2-Step *Standard* Transfer Media)

IColor 1-Step **LIGHT** and **SPEED TRANS LIGHT** Transfer Media for light colored garments

IColor 2-Step **Presto!** Transfer Media for textiles and hard surfaces

IColor 2-Step **Temporary Tattoo** Transfer Media

IColor 1-Step **CLASSIC, Premium, WOOD AND LEATHER** and **CERAMIC** Hard Surface Transfer Media

IColor 1-Step *AquaClear* Transfer Media

IColor Label Media (Clear and White) – Letter and Tabloid size

IColor Window Cling Media (Clear and White) - Banner and cut sheet options

IColor Banner Media

...and more! Contact your dealer for more information.

IColor 800W System Specifications

Print Speed: Print Speed: Up to 45 ppm Color and Monochrome
(Transfer media setting speeds may vary)

Processor: Intel 1.75 GHz

Duty Cycle: Up to 75,000 pg/mo.

Memory: 2GB RAM

Resolution: Up to 1200 x 1200 dpi

Emulation: PCL® 6, PCL 5c; PostScript® 3™

Operating Systems: Windows 7, 8.1 & 10

Interfaces: 10/100-TX Ethernet, High Speed USB v2.0, Optional Wifi

Multipurpose Tray: Standard 100-sheet; handles transfer media, card, mailing label stock and banners

Paper Cassette: 2x 550-sheet Legal/Letter/Universal

Paper Sizes (Min./Max.): Multipurpose tray handles up to 100 sheets – 3" x 5" to 12.6" x 49.6";

- Tray 1 Paper Cassette – Fixed for Letter (8.5" x 11") (216 x 279 mm), A4, A5
- Tray 2 Paper Cassete - User adjustable up to 12" x 18" including Letter (8.5" x 11"), Legal (8.5" x 14"), Exec (10.5" x 7.25"), Ledger (11" x 17"), A3, A4, A5, A6 Custom Sizes: 3.55" x 5.83" – 12.6" x 18" / SRA3 (90 x 148 mm to 320 x 457 mm)

Paper Weight: Standard Trays: 16 – 82 lb. Bond/ 170 lb. Index (60 – 300 g/m2)

Bypass Tray: 14 – 82 lb. Bond/ 170 lb. Index (52 – 300 g/m2)

Size: (WxDxH): 23.1" x 27" x 34" (587 x 685 x 864 mm) (Standard Configuration)

Weight: 187 lb. (85 kg)

Power: 120v or 230v