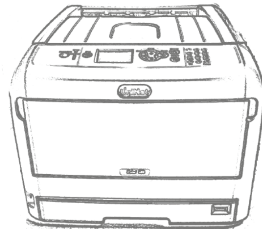
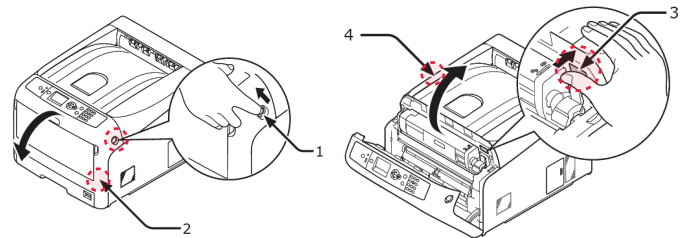


For detailed instructions please refer to the Uninet iColor 600 Printer User Manual and the Uninet iColor TransferRIP User Manual

1. Remove the packing materials and check the components.

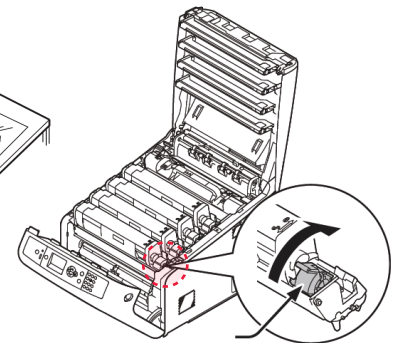
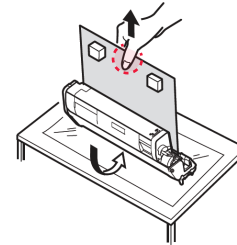
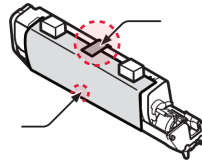
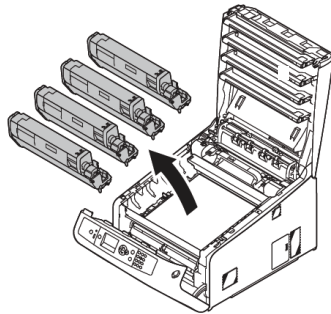


2. Open the front door and top lid of the printer.



3. Remove orange security tape, protective sheet and packing material from around the printer.

- A. Remove the toner and drum cartridges and remove the protective orange tape and protective sheeting from each.
- B. Lock the blue lever forward.
- C. Reinstall the cartridges.



* Please note the blue handle on the white cartridge is already in the locked position *

4. Install the Uninet iColor Printer Driver.

- Insert the provided USB Flash drive, and select "Uninet iColor Software"

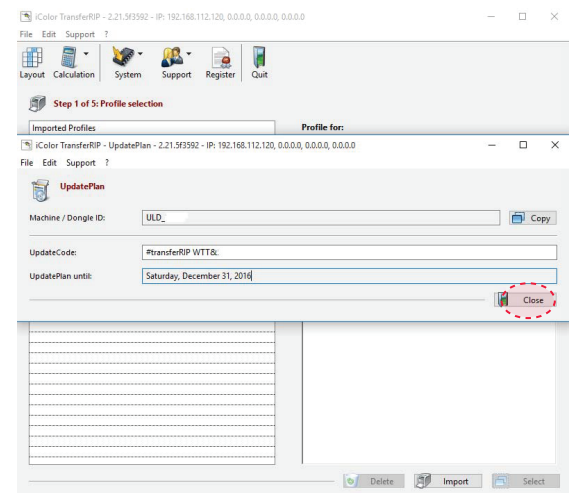
• Do Not Remove After Installation

NOTE: Only connect the Printer to the PC when prompted to by the software.

5. Connect the power cord and USB cable to the printer. Power on the printer.

6. Install the Uninet iColor TransferRIP software

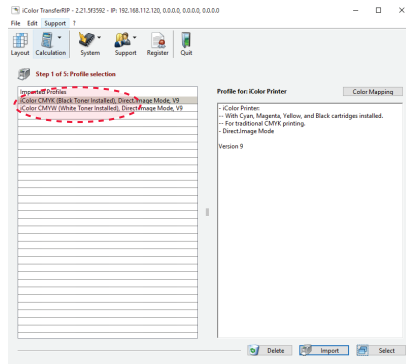
- A. Insert the dongle into an available USB port.
- The TransferRIP software is located on still the inserted Uninet iColor Software USB Drive.
- B. When prompted, enter the Update Code.
- Your code is in a text file on the UniNet iColor Software USB Drive.
- Please copy and paste the entire string of code.
- C. The date below will automatically populate.
- D. Then select "Close".



7. Install the Uninet IColor TransferRIP software

Step 2

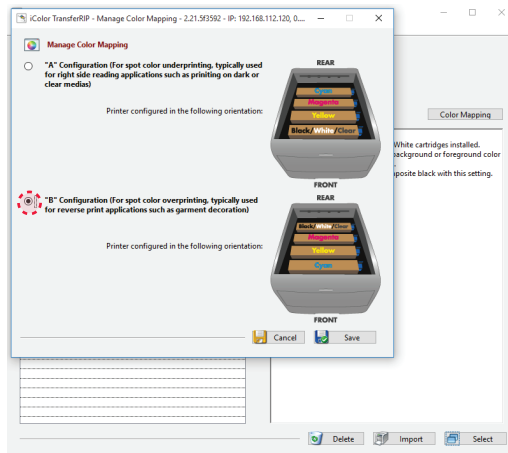
- Import the two profiles for white under print or white/clear over printing
 - CMYK Black Toner
 - CMYW White Toner
 - The profiles are located on the Uninet IColor Software USB Drive



8. Color Mapping

Step 3

- A. Choose the desired profile based on the Black or White cartridge being installed.
- B. Select on “Color Mapping”.
- C. Choose the desired color mapping option.
 - The location of the cartridges in the printer must match the mapping in the software.
- D. Select “Save” and select the desired profile.



Note: There are two options for “Color Mapping”

Underprinting White

- Typically used for right side reading applications such as printing color on clear or dark medias



Overprinting White/Clear

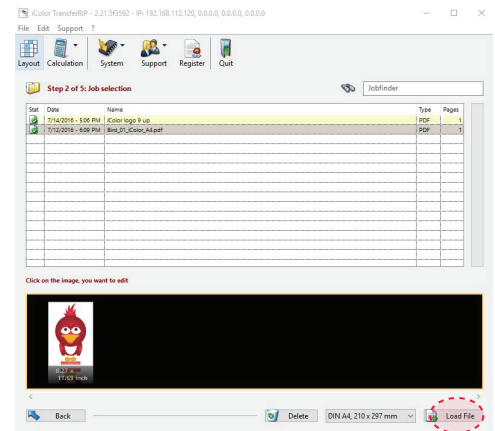
- Typically used for garment decoration



9. Load Files

Step 4

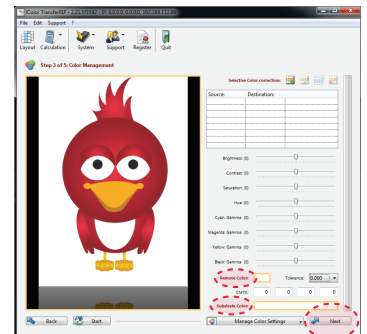
- A. Select your paper size
- B. Select load file
- C. Select preview graphic



10. Color Adjustments

Step 4

- A. Make any desired color adjustments to the artwork.
- B. Select “Next”.



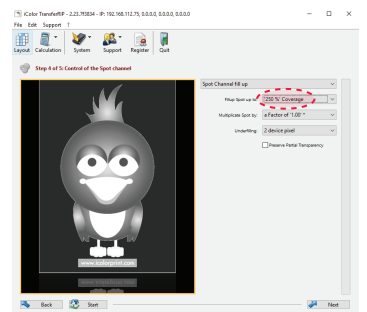
11. Modify the White Coverage

Step 5

- A. Depending on media and artwork, make adjustments to the artwork.
- B. Select “Next”.

Note: 150% to 250% is suggested for most applications.

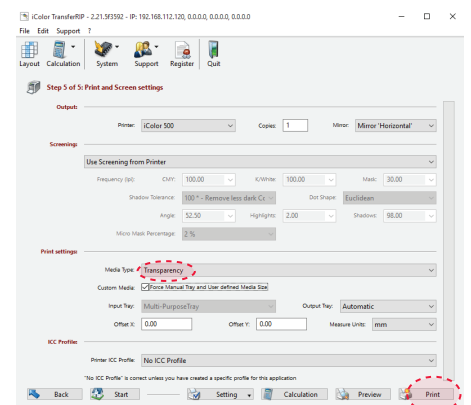
Use of the “Underfilling” feature is highly recommended.



12. Printing

Step 6

- Adjust settings to print the artwork based on the media being used.
- Select “Print”.
- When prompted, select the “online” button on the front panel of the printer to print the job.



Note: Recommend using of the MPT Tray